

 The product graphics in this manual are schematic diagrams, and all products are subject to actual products.
© Copyright TONGOU Electrical All Rights Reserved.

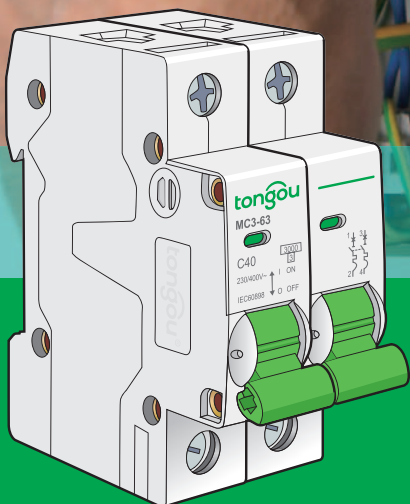
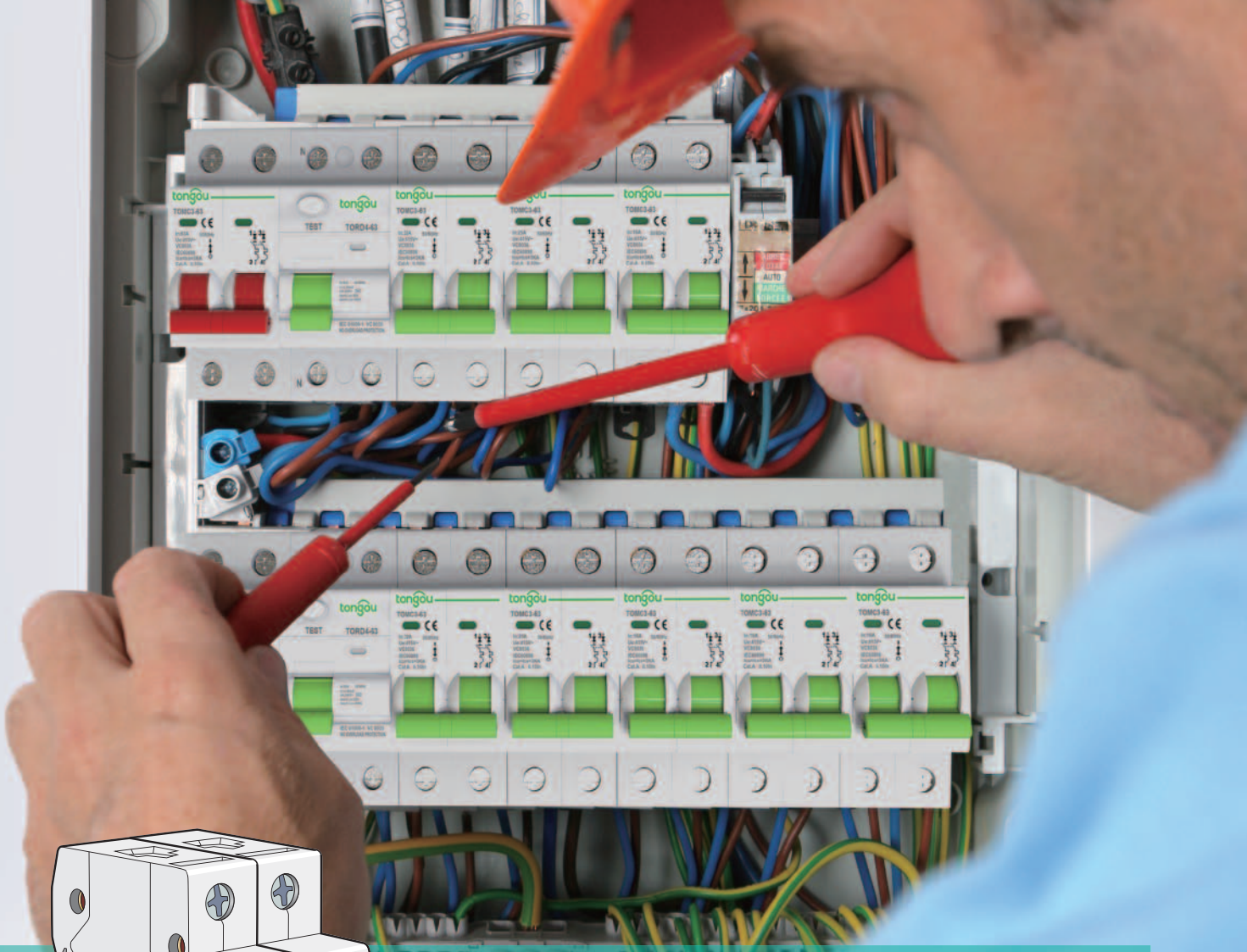
tongou | Electric Artisan
Since 1993

Wenzhou Tongou Electrical Co.,Ltd

Paidong Industrial Zone, liushi,
Wenzhou City, Zhejiang province, China.
China Tel:+86-577-62676885

Fax:+86-577-62676885
Mobile:+86-15325075111
Http://www.elcb.net E-mail:elcb@elcb.net





Circuit Protection

MCB, RCCB, RCBO, Switch-disconnector

Circuit Protection

> MCB, RCCB, RCBO, Switch-disconnector

PV EV New Energy

> Type B RCCB, DC MCB, Modular contactor
> DC Surge arrester, DC Fuse Holder

Industrial Control & Power Distribution

> Contactor, MCCB,
> LV power Intelligent circuit breaker

tongou
ELECTRICAL SINCE 1993



Green & Safe

Electric artisan in the industry



Certification & Warranty

Tongou electrical manufactured products is fully tested, approved and certified by national and international third parties from BV(Bureau Veritas), TUV, Intertek, CQC, SAA, SGS Laboratory organization, Won approvals of CE, SEMKO, CB, CCC, RoHS and ISO9001, ISO14001, OHSAS18001 Quality System Certificates.

Warranty:

Tongou electrical manufactured products with 3-5 years warranty and Lifetime after-sale maintenance.



CE

CB



RoHS



To stay true to our mission, insisting on producing superior quality products to keep electricity safety in the industry:

Over 25 years

Tongou electrical was established in 1993, focus on manufacturing electric products for over 25 years, which has been dedicated effort to protecting personal body safety, circuit safety and electrical equipment safety.

Over 4000 square

With an area of more than 4,000 square meters, tongou electrical has more than 100 employees produce the reliable products, we believe that great people and partners make Tongou will be a great company.

Automation

More automation equipment and manipulator be involved in production, to provide more efficient, more stable products.

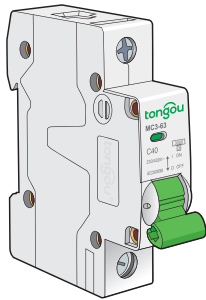
'You can tell it's a high quality product when you hold it in your hands'

CONTENTS

TOMC3-63 Miniature Circuit Breaker	01
TOMC5-63 Miniature Circuit Breaker	09
TOMC7-63 Miniature Circuit Breaker	17
TOMCE-63 Miniature Circuit Breaker	25
TOMP65-32 Miniature Circuit Breaker	33
TORD4-63 Residual Current Circuit Breaker	37
TORD5-63 Residual Current Circuit Breaker	43
TORD10-63 Residual Current Circuit Breaker with Overcurrent Protection	45
TOBN1-32 Residual Current Circuit Breaker with Overcurrent Protection	47
TOBNS-40 Residual Current Circuit Breaker with Overcurrent Protection	49
TOBD5-63 Residual Current Circuit Breaker with Overcurrent Protection	51
TOD10-125 Switch-disconnector	53
TOP-SPN Distribution Box	55



TOMC3-63 Miniature Circuit Breaker (Curve B, C, D)



IEC 60947-2 AS/NZS 60898.1
IEC 60898-1
EN 60898-1

- TOMC3-63 circuit breakers are multi-standard circuit breakers which combine the following functions:
 - Circuit protection against short-circuit currents,
 - Circuit protection against overload currents,
 - Suitable for industrial isolation according to IEC/EN 60947-2, standard.

Main

Product or component type	Miniature circuit-breaker
Device application	Distribution
Poles description	1P
Number of protected poles	1
Network type	AC
Trip unit technology	Thermal-magnetic
Curve code	B, C, D
Breaking capacity	4,5kA

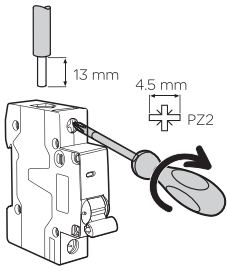
Complementary

[Ue] rated operational voltage	110 V , 230/240V AC	
Control type	Toggle	
Local signalling	ON/OFF indication	
Mounting mode	Clip-on	
Mounting support	DIN rail 35mm	
Colour	Grey	
Endurance (O-C)	Electrical	10,000 cycles
	Mechanical durability	20,000 cycles


Environment

Standards	IEC 60947-2 , IEC 60898-1 , EN60898-1 , AS/NES 60898.1
IP degree of protection	IP40 for modular enclosure conforming to IEC 60529
	IP20 conforming to IEC 60529
Operating altitude	2000 m
Ambient air temperature for operation	-35°C to +70°C
Ambient air temperature for storage	-40°C to +85°C

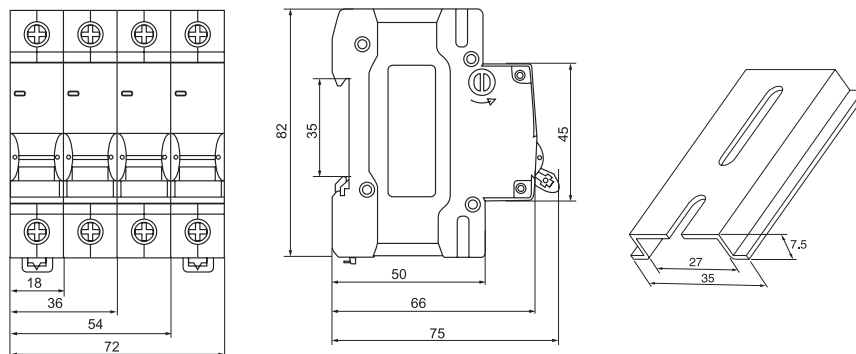
Connection

Rating	Tightening torque	Copper cables	
		Rigid	Flexible or ferrule
	2 N.m	1 to 25 mm ²	1 to 16 mm ²
	2.5 N.m	1 to 35 mm ²	1 to 25 mm ²

Catalog numbers

Type	Width 9 mm modules			
1P	Rating (In)	B Curve	C Curve	D Curve
	1A	TOMC3-63/1/B1	TOMC3-63/1/C1	TOMC3-63/1/D1
	3A	TOMC3-63/1/B3	TOMC3-63/1/C3	TOMC3-63/1/D3
	5A	TOMC3-63/1/B5	TOMC3-63/1/C5	TOMC3-63/1/D5
	6A	TOMC3-63/1/B6	TOMC3-63/1/C6	TOMC3-63/1/D6
	10A	TOMC3-63/1/B10	TOMC3-63/1/C10	TOMC3-63/1/D10
	16A	TOMC3-63/1/B16	TOMC3-63/1/C16	TOMC3-63/1/D16
	20A	TOMC3-63/1/B20	TOMC3-63/1/C20	TOMC3-63/1/D20
	25A	TOMC3-63/1/B25	TOMC3-63/1/C25	TOMC3-63/1/D25
	32A	TOMC3-63/1/B32	TOMC3-63/1/C32	TOMC3-63/1/D32
	40A	TOMC3-63/1/B40	TOMC3-63/1/C40	TOMC3-63/1/D40
	50A	TOMC3-63/1/B50	TOMC3-63/1/C50	TOMC3-63/1/D50
	63A	TOMC3-63/1/B63	TOMC3-63/1/C63	TOMC3-63/1/D63

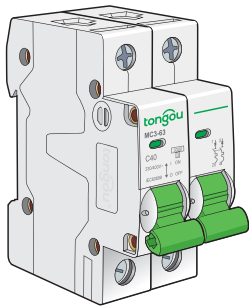
Dimensions (mm)





TOMC3-63 Miniature Circuit Breaker (Curve B, C, D)

IEC 60947-2 AS/NZS 60898.1
IEC 60898-1
EN 60898-1



- TOMC3-63 circuit breakers are multi-standard circuit breakers which combine the following functions:
 - Circuit protection against short-circuit currents,
 - Circuit protection against overload currents,
 - Suitable for industrial isolation according to IEC/EN 60947-2, standard.

Main

Product or component type	Miniature circuit-breaker
Device application	Distribution
Poles description	2P
Number of protected poles	2
Network type	AC
Trip unit technology	Thermal-magnetic
Curve code	B, C, D
Breaking capacity	4.5kA

Complementary

[Ue] rated operational voltage	230V/240V, 380V/415V AC	
Control type	Toggle	
Local signalling	ON/OFF indication	
Mounting mode	Clip-on	
Mounting support	DIN rail 35mm	
Colour	Grey	
Endurance (O-C)	Electrical	10,000 cycles
	Mechanical durability	20,000 cycles

Environment

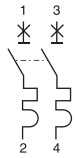
Standards	IEC 60947-2, IEC 60898-1, EN60898-1, AS/NES 60898.1
IP degree of protection	IP40 for modular enclosure conforming to IEC 60529
	IP20 conforming to IEC 60529
Operating altitude	2000 m
Ambient air temperature for operation	-35°C to +70°C
Ambient air temperature for storage	-40°C to +85°C

Connection

Rating	Tightening torque	Copper cables	
		Rigid	Flexible or ferrule
1 to 25 A	2 N.m	1 to 25 mm ²	1 to 16 mm ²
32 to 63 A	2.5 N.m	1 to 35 mm ²	1 to 25 mm ²

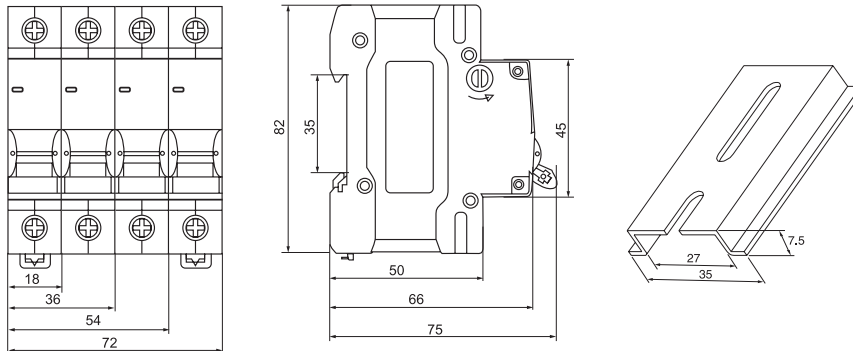
Catalog numbers

Type					Width 9 mm modules
2P	Rating (In)	B Curve	C Curve	D Curve	
	1A	TOMC3-63/2/B1	TOMC3-63/2/C1	TOMC3-63/2/D1	
	3A	TOMC3-63/2/B3	TOMC3-63/2/C3	TOMC3-63/2/D3	
	5A	TOMC3-63/2/B5	TOMC3-63/2/C5	TOMC3-63/2/D5	
	6A	TOMC3-63/2/B6	TOMC3-63/2/C6	TOMC3-63/2/D6	
	10A	TOMC3-63/2/B10	TOMC3-63/2/C10	TOMC3-63/2/D10	
	16A	TOMC3-63/2/B16	TOMC3-63/2/C16	TOMC3-63/2/D16	
	20A	TOMC3-63/2/B20	TOMC3-63/2/C20	TOMC3-63/2/D20	
	25A	TOMC3-63/2/B25	TOMC3-63/2/C25	TOMC3-63/2/D25	
	32A	TOMC3-63/2/B32	TOMC3-63/2/C32	TOMC3-63/2/D32	
	40A	TOMC3-63/2/B40	TOMC3-63/2/C40	TOMC3-63/2/D40	
	50A	TOMC3-63/2/B50	TOMC3-63/2/C50	TOMC3-63/2/D50	
	63A	TOMC3-63/2/B63	TOMC3-63/2/C63	TOMC3-63/2/D63	



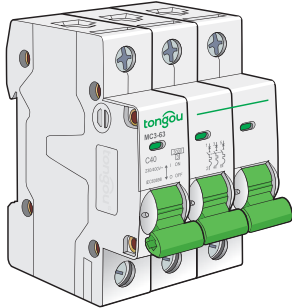
4

Dimensions (mm)





TOMC3-63 Miniature Circuit Breaker (Curve B, C, D)



IEC 60947-2 AS/NZS 60898.1
IEC 60898-1
EN 60898-1

- TOMC3-63 circuit breakers are multi-standard circuit breakers which combine the following functions:
 - Circuit protection against short-circuit currents,
 - Circuit protection against overload currents,
 - Suitable for industrial isolation according to IEC/EN 60947-2, standard.

Main

Product or component type	Miniature circuit-breaker
Device application	Distribution
Poles description	3P
Number of protected poles	3
Network type	AC
Trip unit technology	Thermal-magnetic
Curve code	B, C, D
Breaking capacity	4.5kA

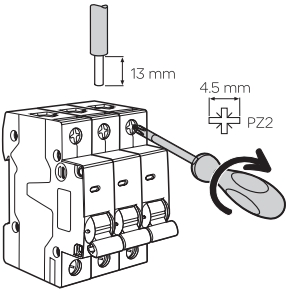
Complementary

[Ue] rated operational voltage	380V/415V AC	
Control type	Toggle	
Local signalling	ON/OFF indication	
Mounting mode	Clip-on	
Mounting support	DIN rail 35mm	
Colour	Grey	
Endurance (O-C)	Electrical	10,000 cycles
	Mechanical durability	20,000 cycles

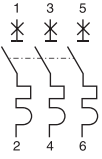
Environment

Standards	IEC 60947-2, IEC 60898-1, EN60898-1, AS/NES 60898.1
IP degree of protection	IP40 for modular enclosure conforming to IEC 60529
	IP20 conforming to IEC 60529
Operating altitude	2000 m
Ambient air temperature for operation	-35°C to +70°C
Ambient air temperature for storage	-40°C to +85°C

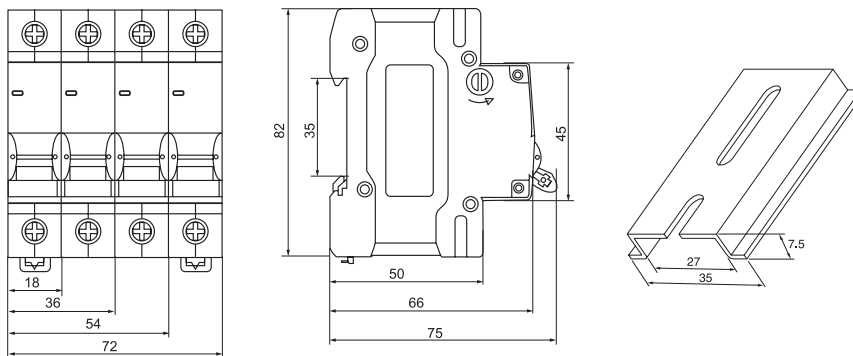
Connection

Rating	Tightening torque	Copper cables	
		Rigid	Flexible or ferrule
			
1 to 25 A	2 N.m	1 to 25 mm ²	1 to 16 mm ²
32 to 63 A	2.5 N.m	1 to 35 mm ²	1 to 25 mm ²

Catalog numbers

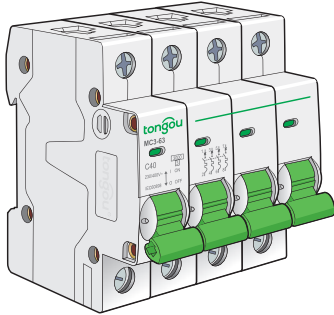
Type					Width 9 mm modules
3P	Rating (In)	B Curve	C Curve	D Curve	
	1A	TOMC3-63/3/B1	TOMC3-63/3/C1	TOMC3-63/3/D1	6
	3A	TOMC3-63/3/B3	TOMC3-63/3/C3	TOMC3-63/3/D3	
	5A	TOMC3-63/3/B5	TOMC3-63/3/C5	TOMC3-63/3/D5	
	6A	TOMC3-63/3/B6	TOMC3-63/3/C6	TOMC3-63/3/D6	
	10A	TOMC3-63/3/B10	TOMC3-63/3/C10	TOMC3-63/3/D10	
	16A	TOMC3-63/3/B16	TOMC3-63/3/C16	TOMC3-63/3/D16	
	20A	TOMC3-63/3/B20	TOMC3-63/3/C20	TOMC3-63/3/D20	
	25A	TOMC3-63/3/B25	TOMC3-63/3/C25	TOMC3-63/3/D25	
	32A	TOMC3-63/3/B32	TOMC3-63/3/C32	TOMC3-63/3/D32	
	40A	TOMC3-63/3/B40	TOMC3-63/3/C40	TOMC3-63/3/D40	
	50A	TOMC3-63/3/B50	TOMC3-63/3/C50	TOMC3-63/3/D50	
	63A	TOMC3-63/3/B63	TOMC3-63/3/C63	TOMC3-63/3/D63	

Dimensions (mm)





TOMC3-63 Miniature Circuit Breaker (Curve B, C, D)



IEC 60947-2 AS/NZS 60898.1
IEC 60898-1
EN 60898-1

- TOMC3-63 circuit breakers are multi-standard circuit breakers which combine the following functions:
 - Circuit protection against short-circuit currents,
 - Circuit protection against overload currents,
 - Suitable for industrial isolation according to IEC/EN 60947-2, standard.

Main

Product or component type	Miniature circuit-breaker
Device application	Distribution
Poles description	4P
Number of protected poles	4
Network type	AC
Trip unit technology	Thermal-magnetic
Curve code	B, C, D
Breaking capacity	4,5kA

Complementary

[Ue] rated operational voltage	380V/415V AC	
Control type	Toggle	
Local signalling	ON/OFF indication	
Mounting mode	Clip-on	
Mounting support	DIN rail 35mm	
Colour	Grey	
Endurance (O-C)	Electrical	10,000 cycles
	Mechanical durability	20,000 cycles

Environment

Standards	IEC 60947-2, IEC 60898-1, EN60898-1, AS/NES 60898.1
IP degree of protection	IP40 for modular enclosure conforming to IEC 60529
	IP20 conforming to IEC 60529
Operating altitude	2000 m
Ambient air temperature for operation	-35°C to +70°C
Ambient air temperature for storage	-40°C to +85°C

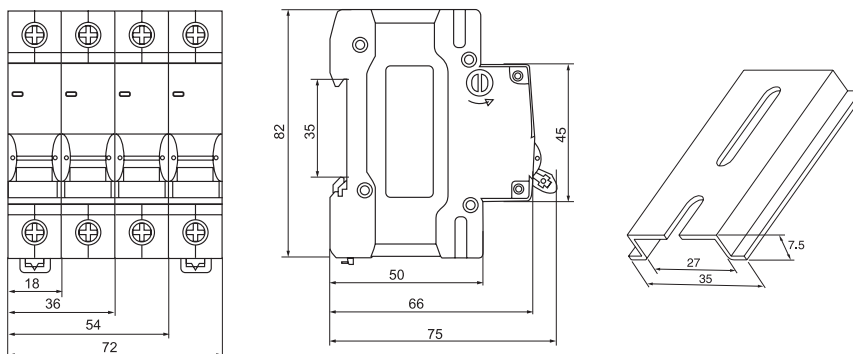
Connection

Rating	Tightening torque	Copper cables	
		Rigid	Flexible or ferrule
1 to 25 A	2 N.m	1 to 25 mm ²	1 to 16 mm ²
32 to 63 A	2.5 N.m	1 to 35 mm ²	1 to 25 mm ²

Catalog numbers

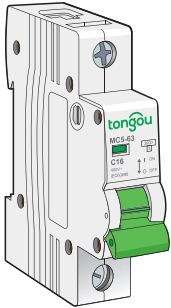
Type					Width 9 mm modules
4P	Rating (In)	B Curve	C Curve	D Curve	
	1A	TOMC3-63/4/B1	TOMC3-63/4/C1	TOMC3-63/4/D1	8
	3A	TOMC3-63/4/B3	TOMC3-63/4/C3	TOMC3-63/4/D3	
	5A	TOMC3-63/4/B5	TOMC3-63/4/C5	TOMC3-63/4/D5	
	6A	TOMC3-63/4/B6	TOMC3-63/4/C6	TOMC3-63/4/D6	
	10A	TOMC3-63/4/B10	TOMC3-63/4/C10	TOMC3-63/4/D10	
	16A	TOMC3-63/4/B16	TOMC3-63/4/C16	TOMC3-63/4/D16	
	20A	TOMC3-63/4/B20	TOMC3-63/4/C20	TOMC3-63/4/D20	
	25A	TOMC3-63/4/B25	TOMC3-63/4/C25	TOMC3-63/4/D25	
	32A	TOMC3-63/4/B32	TOMC3-63/4/C32	TOMC3-63/4/D32	
	40A	TOMC3-63/4/B40	TOMC3-63/4/C40	TOMC3-63/4/D40	
	50A	TOMC3-63/4/B50	TOMC3-63/4/C50	TOMC3-63/4/D50	
	63A	TOMC3-63/4/B63	TOMC3-63/4/C63	TOMC3-63/4/D63	

Dimensions (mm)





TOMC5-63 Miniature Circuit Breaker (Curve B, C, D)



IEC 60947-2 AS/NZS 60898.1
IEC 60898-1
EN 60898-1

- TOMC5-63 circuit breakers are multi-standard circuit breakers which combine the following functions:
 - Circuit protection against short-circuit currents,
 - Circuit protection against overload currents,
 - Suitable for industrial isolation according to IEC/EN 60947-2, standard.

Main

Product or component type	Miniature circuit-breaker
Device application	Distribution
Poles description	1P
Number of protected poles	1
Network type	AC
Trip unit technology	Thermal-magnetic
Curve code	B, C, D
Breaking capacity	4,5kA

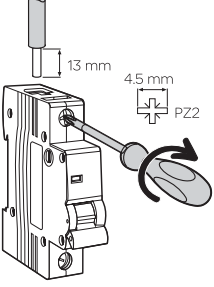
Complementary

[Ue] rated operational voltage	110 V , 230/240V AC	
Control type	Toggle	
Local signalling	ON/OFF indication	
Mounting mode	Clip-on	
Mounting support	DIN rail 35mm	
Colour	Grey	
Endurance (O-C)	Electrical	10,000 cycles
	Mechanical durability	20,000 cycles


Environment

Standards	IEC 60947-2 , IEC 60898-1 , EN60898-1 , AS/NES 60898.1
IP degree of protection	IP40 for modular enclosure conforming to IEC 60529
	IP20 conforming to IEC 60529
Operating altitude	2000 m
Ambient air temperature for operation	-35°C to +70°C
Ambient air temperature for storage	-40°C to +85°C

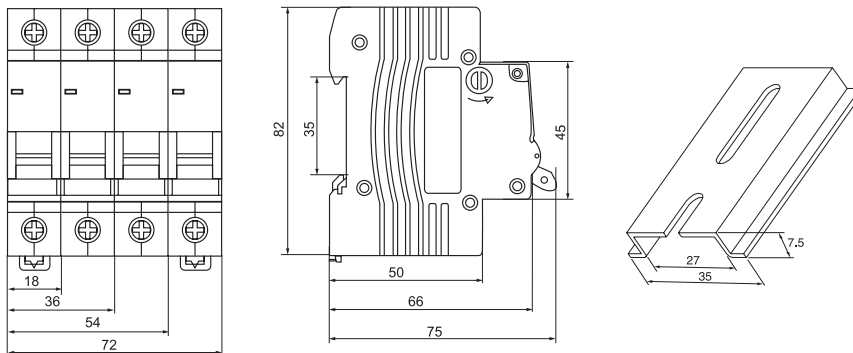
Connection

Rating	Tightening torque	Copper cables	
		Rigid	Flexible or ferrule
			
1 to 25 A	2 N.m	1 to 25 mm ²	1 to 16 mm ²
32 to 63 A	2.5 N.m	1 to 35 mm ²	1 to 25 mm ²

Catalog numbers

Type					Width 9 mm modules
1P	Rating (In)	B Curve	C Curve	D Curve	
	1A	TOMC5-63/1/B1	TOMC5-63/1/C1	TOMC5-63/1/D1	2
	3A	TOMC5-63/1/B3	TOMC5-63/1/C3	TOMC5-63/1/D3	
	5A	TOMC5-63/1/B5	TOMC5-63/1/C5	TOMC5-63/1/D5	
	6A	TOMC5-63/1/B6	TOMC5-63/1/C6	TOMC5-63/1/D6	
	10A	TOMC5-63/1/B10	TOMC5-63/1/C10	TOMC5-63/1/D10	
	16A	TOMC5-63/1/B16	TOMC5-63/1/C16	TOMC5-63/1/D16	
	20A	TOMC5-63/1/B20	TOMC5-63/1/C20	TOMC5-63/1/D20	
	25A	TOMC5-63/1/B25	TOMC5-63/1/C25	TOMC5-63/1/D25	
	32A	TOMC5-63/1/B32	TOMC5-63/1/C32	TOMC5-63/1/D32	
	40A	TOMC5-63/1/B40	TOMC5-63/1/C40	TOMC5-63/1/D40	
	50A	TOMC5-63/1/B50	TOMC5-63/1/C50	TOMC5-63/1/D50	
	63A	TOMC5-63/1/B63	TOMC5-63/1/C63	TOMC5-63/1/D63	

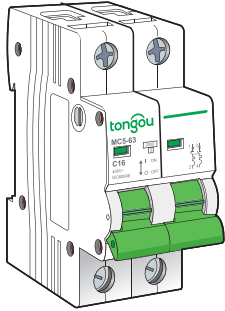
Dimensions (mm)



Protection
Circuit protection



TOMC5-63 Miniature Circuit Breaker (Curve B, C, D)



IEC 60947-2 AS/NZS 60898.1
IEC 60898-1
EN 60898-1

- TOMC5-63 circuit breakers are multi-standard circuit breakers which combine the following functions:
 - Circuit protection against short-circuit currents,
 - Circuit protection against overload currents,
 - Suitable for industrial isolation according to IEC/EN 60947-2, standard.

Main

Product or component type	Miniature circuit-breaker
Device application	Distribution
Poles description	2P
Number of protected poles	2
Network type	AC
Trip unit technology	Thermal-magnetic
Curve code	B, C, D
Breaking capacity	4,5kA

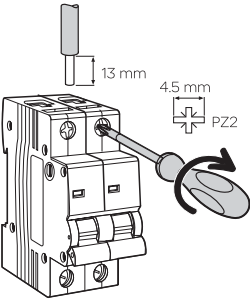
Complementary

[Ue] rated operational voltage	230V/240V, 380V/415V AC	
Control type	Toggle	
Local signalling	ON/OFF indication	
Mounting mode	Clip-on	
Mounting support	DIN rail 35mm	
Colour	Grey	
Endurance (O-C)	Electrical	10,000 cycles
	Mechanical durability	20,000 cycles


Environment

Standards	IEC 60947-2, IEC 60898-1, EN60898-1, AS/NES 60898.1
IP degree of protection	IP40 for modular enclosure conforming to IEC 60529
	IP20 conforming to IEC 60529
Operating altitude	2000 m
Ambient air temperature for operation	-35°C to +70°C
Ambient air temperature for storage	-40°C to +85°C

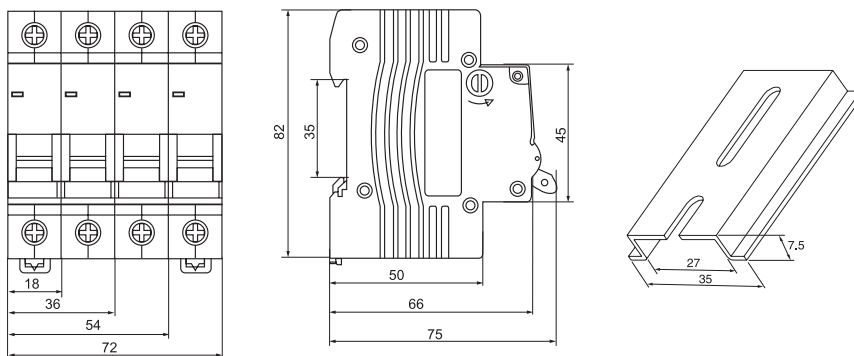
Connection

Rating	Tightening torque	Copper cables	
		Rigid	Flexible or ferrule
	2 N.m	1 to 25 mm ²	1 to 16 mm ²
	2.5 N.m	1 to 35 mm ²	1 to 25 mm ²

Catalog numbers

Type					Width 9 mm modules
2P	Rating (In)	B Curve	C Curve	D Curve	
	1A	TOMC5-63/2/B1	TOMC5-63/2/C1	TOMC5-63/2/D1	4
	3A	TOMC5-63/2/B3	TOMC5-63/2/C3	TOMC5-63/2/D3	
	5A	TOMC5-63/2/B5	TOMC5-63/2/C5	TOMC5-63/2/D5	
	6A	TOMC5-63/2/B6	TOMC5-63/2/C6	TOMC5-63/2/D6	
	10A	TOMC5-63/2/B10	TOMC5-63/2/C10	TOMC5-63/2/D10	
	16A	TOMC5-63/2/B16	TOMC5-63/2/C16	TOMC5-63/2/D16	
	20A	TOMC5-63/2/B20	TOMC5-63/2/C20	TOMC5-63/2/D20	
	25A	TOMC5-63/2/B25	TOMC5-63/2/C25	TOMC5-63/2/D25	
	32A	TOMC5-63/2/B32	TOMC5-63/2/C32	TOMC5-63/2/D32	
	40A	TOMC5-63/2/B40	TOMC5-63/2/C40	TOMC5-63/2/D40	
	50A	TOMC5-63/2/B50	TOMC5-63/2/C50	TOMC5-63/2/D50	
	63A	TOMC5-63/2/B63	TOMC5-63/2/C63	TOMC5-63/2/D63	

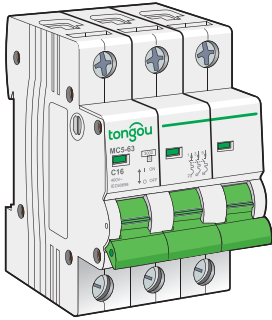
Dimensions (mm)



Protection
Circuit protection



TOMC5-63 Miniature Circuit Breaker (Curve B, C, D)



IEC 60947-2 AS/NZS 60898.1
IEC 60898-1
EN 60898-1

- TOMC5-63 circuit breakers are multi-standard circuit breakers which combine the following functions:
 - Circuit protection against short-circuit currents,
 - Circuit protection against overload currents,
 - Suitable for industrial isolation according to IEC/EN 60947-2, standard.

Main

Product or component type	Miniature circuit-breaker
Device application	Distribution
Poles description	3P
Number of protected poles	3
Network type	AC
Trip unit technology	Thermal-magnetic
Curve code	B, C, D
Breaking capacity	4,5kA

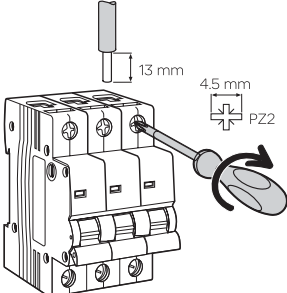
Complementary

[Ue] rated operational voltage	380V/415V AC	
Control type	Toggle	
Local signalling	ON/OFF indication	
Mounting mode	Clip-on	
Mounting support	DIN rail 35mm	
Colour	Grey	
Endurance (O-C)	Electrical	10,000 cycles
	Mechanical durability	20,000 cycles

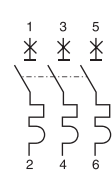
Environment

Standards	IEC 60947-2, IEC 60898-1, EN60898-1, AS/NES 60898.1
IP degree of protection	IP40 for modular enclosure conforming to IEC 60529
	IP20 conforming to IEC 60529
Operating altitude	2000 m
Ambient air temperature for operation	-35°C to +70°C
Ambient air temperature for storage	-40°C to +85°C

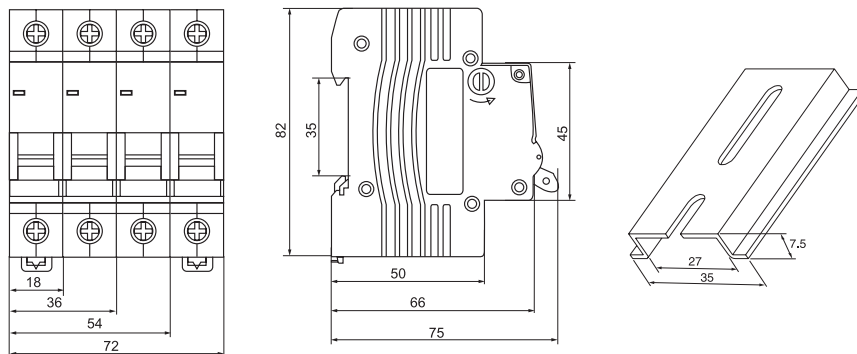
Connection

Rating	Tightening torque	Copper cables	
		Rigid	Flexible or ferrule
			
1 to 25 A	2 N.m	1 to 25 mm ²	1 to 16 mm ²
32 to 63 A	2.5 N.m	1 to 35 mm ²	1 to 25 mm ²

Catalog numbers

Type	Width 9 mm modules			
3P	Rating (In)	B Curve	C Curve	D Curve
	1A	TOMC5-63/3/B1	TOMC5-63/3/C1	TOMC5-63/3/D1
	3A	TOMC5-63/3/B3	TOMC5-63/3/C3	TOMC5-63/3/D3
	5A	TOMC5-63/3/B5	TOMC5-63/3/C5	TOMC5-63/3/D5
	6A	TOMC5-63/3/B6	TOMC5-63/3/C6	TOMC5-63/3/D6
	10A	TOMC5-63/3/B10	TOMC5-63/3/C10	TOMC5-63/3/D10
	16A	TOMC5-63/3/B16	TOMC5-63/3/C16	TOMC5-63/3/D16
	20A	TOMC5-63/3/B20	TOMC5-63/3/C20	TOMC5-63/3/D20
	25A	TOMC5-63/3/B25	TOMC5-63/3/C25	TOMC5-63/3/D25
	32A	TOMC5-63/3/B32	TOMC5-63/3/C32	TOMC5-63/3/D32
	40A	TOMC5-63/3/B40	TOMC5-63/3/C40	TOMC5-63/3/D40
	50A	TOMC5-63/3/B50	TOMC5-63/3/C50	TOMC5-63/3/D50
	63A	TOMC5-63/3/B63	TOMC5-63/3/C63	TOMC5-63/3/D63

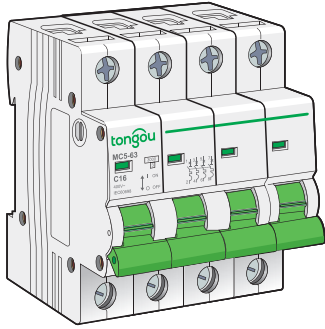
Dimensions (mm)



Protection
Circuit protection



TOMC5-63 Miniature Circuit Breaker (Curve B, C, D)



IEC 60947-2 AS/NZS 60898.1
IEC 60898-1
EN 60898-1

- TOMC5-63 circuit breakers are multi-standard circuit breakers which combine the following functions:
 - Circuit protection against short-circuit currents,
 - Circuit protection against overload currents,
 - Suitable for industrial isolation according to IEC/EN 60947-2, standard.

Main

Product or component type	Miniature circuit-breaker
Device application	Distribution
Poles description	4P
Number of protected poles	4
Network type	AC
Trip unit technology	Thermal-magnetic
Curve code	B, C, D
Breaking capacity	4,5kA

Complementary

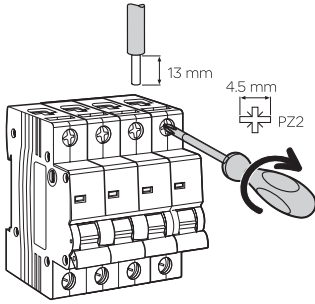
[Ue] rated operational voltage	380V/415V AC	
Control type	Toggle	
Local signalling	ON/OFF indication	
Mounting mode	Clip-on	
Mounting support	DIN rail 35mm	
Colour	Grey	
Endurance (O-C)	Electrical	10,000 cycles
	Mechanical durability	20,000 cycles

Environment

Standards	IEC 60947-2, IEC 60898-1, EN60898-1, AS/NES 60898.1
IP degree of protection	IP40 for modular enclosure conforming to IEC 60529
	IP20 conforming to IEC 60529
Operating altitude	2000 m
Ambient air temperature for operation	-35°C to +70°C
Ambient air temperature for storage	-40°C to +85°C

Connection

Rating	Tightening torque	Copper cables	
		Rigid	Flexible or ferrule



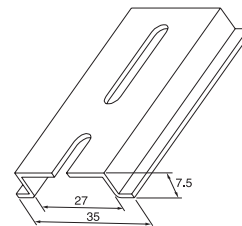
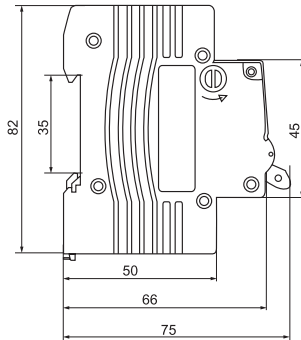
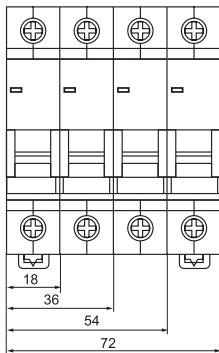
1 to 25 A	2 N.m	1 to 25 mm ²	1 to 16 mm ²
32 to 63 A	2.5 N.m	1 to 35 mm ²	1 to 25 mm ²

Catalog numbers

Type	Width 9 mm modules			
4P	Rating (In)	B Curve	C Curve	D Curve
	1A	TOMC5-63/4/B1	TOMC5-63/4/C1	TOMC5-63/4/D1
	3A	TOMC5-63/4/B3	TOMC5-63/4/C3	TOMC5-63/4/D3
	5A	TOMC5-63/4/B5	TOMC5-63/4/C5	TOMC5-63/4/D5
	6A	TOMC5-63/4/B6	TOMC5-63/4/C6	TOMC5-63/4/D6
	10A	TOMC5-63/4/B10	TOMC5-63/4/C10	TOMC5-63/4/D10
	16A	TOMC5-63/4/B16	TOMC5-63/4/C16	TOMC5-63/4/D16
	20A	TOMC5-63/4/B20	TOMC5-63/4/C20	TOMC5-63/4/D20
	25A	TOMC5-63/4/B25	TOMC5-63/4/C25	TOMC5-63/4/D25
	32A	TOMC5-63/4/B32	TOMC5-63/4/C32	TOMC5-63/4/D32
	40A	TOMC5-63/4/B40	TOMC5-63/4/C40	TOMC5-63/4/D40
	50A	TOMC5-63/4/B50	TOMC5-63/4/C50	TOMC5-63/4/D50
	63A	TOMC5-63/4/B63	TOMC5-63/4/C63	TOMC5-63/4/D63

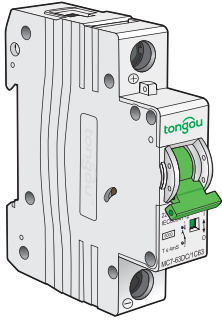
8

Dimensions (mm)





TOMC7-63 Miniature Circuit Breaker (Curve B, C, D)



IEC 60947-2 AS/NZS 60898.1
IEC 60898-1
EN 60898-1

- TOMC7-63 circuit breakers are multi-standard circuit breakers which combine the following functions:
 - Circuit protection against short-circuit currents,
 - Circuit protection against overload currents,
 - Suitable for industrial isolation according to IEC/EN 60947-2, standard.

Main

Product or component type	Miniature circuit-breaker
Device application	Distribution
Poles description	1P
Number of protected poles	1
Network type	AC
Trip unit technology	Thermal-magnetic
Curve code	B, C, D
Breaking capacity	6kA

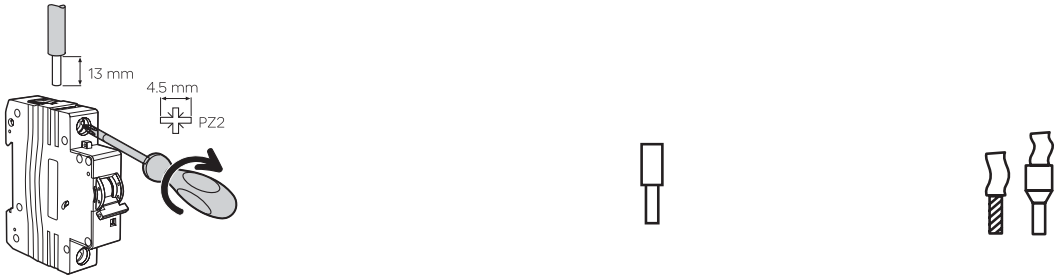
Complementary

[Ue] rated operational voltage	110 V , 230/240V AC	
Control type	Toggle	
Local signalling	ON/OFF indication	
Mounting mode	Clip-on	
Mounting support	DIN rail 35mm	
Colour	Grey	
Endurance (O-C)	Electrical	10,000 cycles
	Mechanical durability	20,000 cycles


Environment

Standards	IEC 60947-2 , IEC 60898-1 , EN60898-1 , AS/NES 60898.1
IP degree of protection	IP40 for modular enclosure conforming to IEC 60529
	IP20 conforming to IEC 60529
Operating altitude	2000 m
Ambient air temperature for operation	-35°C to +70°C
Ambient air temperature for storage	-40°C to +85°C

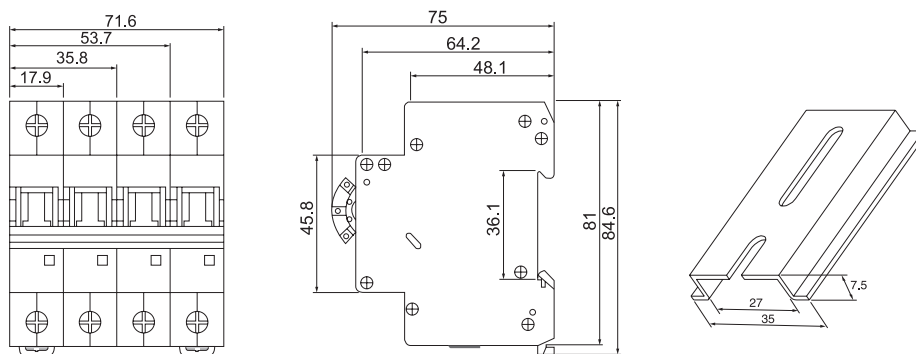
Connection

Rating	Tightening torque	Copper cables	
		Rigid	Flexible or ferrule
			
1 to 25 A	2 N.m	1 to 25 mm ²	1 to 16 mm ²
32 to 63 A	2.5 N.m	1 to 35 mm ²	1 to 25 mm ²

Catalog numbers

Type					Width 9 mm modules
1P	Rating (In)	B Curve	C Curve	D Curve	
	1A	TOMC7-63/1/B1	TOMC7-63/1/C1	TOMC7-63/1/D1	2
	3A	TOMC7-63/1/B3	TOMC7-63/1/C3	TOMC7-63/1/D3	
	5A	TOMC7-63/1/B5	TOMC7-63/1/C5	TOMC7-63/1/D5	
	6A	TOMC7-63/1/B6	TOMC7-63/1/C6	TOMC7-63/1/D6	
	10A	TOMC7-63/1/B10	TOMC7-63/1/C10	TOMC7-63/1/D10	
	16A	TOMC7-63/1/B16	TOMC7-63/1/C16	TOMC7-63/1/D16	
	20A	TOMC7-63/1/B20	TOMC7-63/1/C20	TOMC7-63/1/D20	
	25A	TOMC7-63/1/B25	TOMC7-63/1/C25	TOMC7-63/1/D25	
	32A	TOMC7-63/1/B32	TOMC7-63/1/C32	TOMC7-63/1/D32	
	40A	TOMC7-63/1/B40	TOMC7-63/1/C40	TOMC7-63/1/D40	
	50A	TOMC7-63/1/B50	TOMC7-63/1/C50	TOMC7-63/1/D50	
	63A	TOMC7-63/1/B63	TOMC7-63/1/C63	TOMC7-63/1/D63	

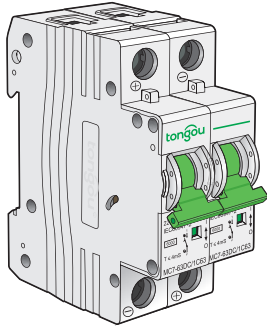
Dimensions (mm)



Protection
Circuit protection



TOMC7-63 Miniature Circuit Breaker (Curve B, C, D)



IEC 60947-2 AS/NZS 60898.1
IEC 60898-1
EN 60898-1

- TOMC7-63 circuit breakers are multi-standard circuit breakers which combine the following functions:
 - Circuit protection against short-circuit currents,
 - Circuit protection against overload currents,
 - Suitable for industrial isolation according to IEC/EN 60947-2, standard.

Main

Product or component type	Miniature circuit-breaker
Device application	Distribution
Poles description	2P
Number of protected poles	2
Network type	AC
Trip unit technology	Thermal-magnetic
Curve code	B, C, D
Breaking capacity	6kA

Complementary

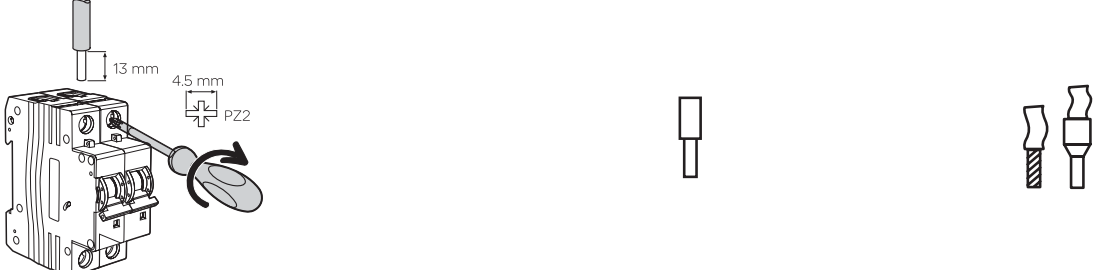
[Ue] rated operational voltage	230V/240V, 380V/415V AC	
Control type	Toggle	
Local signalling	ON/OFF indication	
Mounting mode	Clip-on	
Mounting support	DIN rail 35mm	
Colour	Grey	
Endurance (O-C)	Electrical	10,000 cycles
	Mechanical durability	20,000 cycles

Environment

Standards	IEC 60947-2, IEC 60898-1, EN60898-1, AS/NES 60898.1
IP degree of protection	IP40 for modular enclosure conforming to IEC 60529
	IP20 conforming to IEC 60529
Operating altitude	2000 m
Ambient air temperature for operation	-35°C to +70°C
Ambient air temperature for storage	-40°C to +85°C

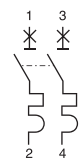
Connection

Rating	Tightening torque	Copper cables	
		Rigid	Flexible or ferrule

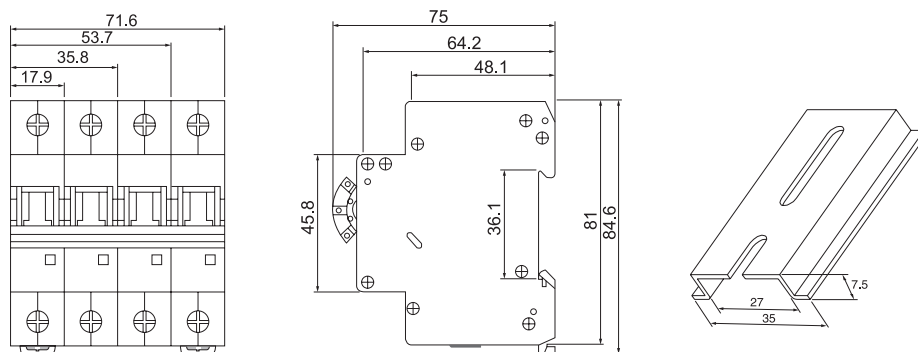


1 to 25 A	2 N.m	1 to 25 mm ²	1 to 16 mm ²
32 to 63 A	2.5 N.m	1 to 35 mm ²	1 to 25 mm ²

Catalog numbers

Type	Rating (In)	B Curve	C Curve	D Curve	Width 9 mm modules
	1A	TOMC7-63/2/B1	TOMC7-63/2/C1	TOMC7-63/2/D1	4
	3A	TOMC7-63/2/B3	TOMC7-63/2/C3	TOMC7-63/2/D3	
	5A	TOMC7-63/2/B5	TOMC7-63/2/C5	TOMC7-63/2/D5	
	6A	TOMC7-63/2/B6	TOMC7-63/2/C6	TOMC7-63/2/D6	
	10A	TOMC7-63/2/B10	TOMC7-63/2/C10	TOMC7-63/2/D10	
	16A	TOMC7-63/2/B16	TOMC7-63/2/C16	TOMC7-63/2/D16	
	20A	TOMC7-63/2/B20	TOMC7-63/2/C20	TOMC7-63/2/D20	
	25A	TOMC7-63/2/B25	TOMC7-63/2/C25	TOMC7-63/2/D25	
	32A	TOMC7-63/2/B32	TOMC7-63/2/C32	TOMC7-63/2/D32	
	40A	TOMC7-63/2/B40	TOMC7-63/2/C40	TOMC7-63/2/D40	
	50A	TOMC7-63/2/B50	TOMC7-63/2/C50	TOMC7-63/2/D50	
	63A	TOMC7-63/2/B63	TOMC7-63/2/C63	TOMC7-63/2/D63	

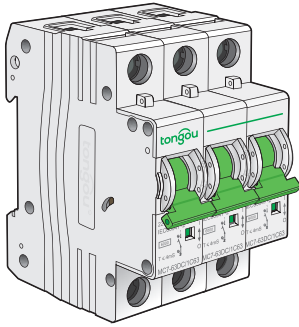
Dimensions (mm)



Protection
Circuit protection



TOMC7-63 Miniature Circuit Breaker (Curve B, C, D)



IEC 60947-2 AS/NZS 60898.1
IEC 60898-1
EN 60898-1

- TOMC7-63 circuit breakers are multi-standard circuit breakers which combine the following functions:
 - Circuit protection against short-circuit currents,
 - Circuit protection against overload currents,
 - Suitable for industrial isolation according to IEC/EN 60947-2, standard.

Main

Product or component type	Miniature circuit-breaker
Device application	Distribution
Poles description	3P
Number of protected poles	3
Network type	AC
Trip unit technology	Thermal-magnetic
Curve code	B, C, D
Breaking capacity	6kA

Complementary

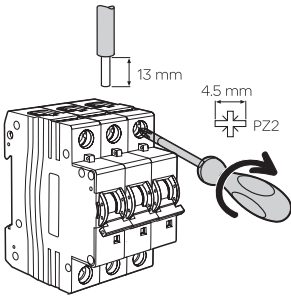
[Ue] rated operational voltage	380V/415V AC	
Control type	Toggle	
Local signalling	ON/OFF indication	
Mounting mode	Clip-on	
Mounting support	DIN rail 35mm	
Colour	Grey	
Endurance (O-C)	Electrical	10,000 cycles
	Mechanical durability	20,000 cycles

Environment

Standards	IEC 60947-2, IEC 60898-1, EN60898-1, AS/NES 60898.1
IP degree of protection	IP40 for modular enclosure conforming to IEC 60529
	IP20 conforming to IEC 60529
Operating altitude	2000 m
Ambient air temperature for operation	-35°C to +70°C
Ambient air temperature for storage	-40°C to +85°C

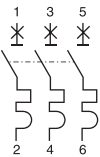
Connection

Rating	Tightening torque	Copper cables	
		Rigid	Flexible or ferrule
1 to 25 A	2 N.m	1 to 25 mm ²	1 to 16 mm ²
32 to 63 A	2.5 N.m	1 to 35 mm ²	1 to 25 mm ²

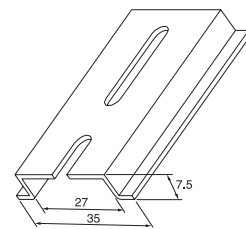
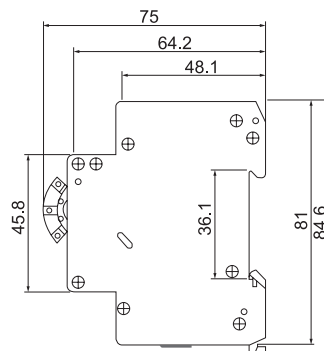
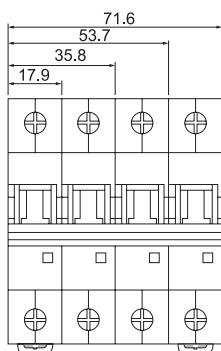


Catalog numbers

Type					Width 9 mm modules
3P	Rating (In)	B Curve	C Curve	D Curve	
	1A	TOMC7-63/3/B1	TOMC7-63/3/C1	TOMC7-63/3/D1	
	3A	TOMC7-63/3/B3	TOMC7-63/3/C3	TOMC7-63/3/D3	
	5A	TOMC7-63/3/B5	TOMC7-63/3/C5	TOMC7-63/3/D5	
	6A	TOMC7-63/3/B6	TOMC7-63/3/C6	TOMC7-63/3/D6	
	10A	TOMC7-63/3/B10	TOMC7-63/3/C10	TOMC7-63/3/D10	
	16A	TOMC7-63/3/B16	TOMC7-63/3/C16	TOMC7-63/3/D16	6
	20A	TOMC7-63/3/B20	TOMC7-63/3/C20	TOMC7-63/3/D20	
	25A	TOMC7-63/3/B25	TOMC7-63/3/C25	TOMC7-63/3/D25	
	32A	TOMC7-63/3/B32	TOMC7-63/3/C32	TOMC7-63/3/D32	
	40A	TOMC7-63/3/B40	TOMC7-63/3/C40	TOMC7-63/3/D40	
	50A	TOMC7-63/3/B50	TOMC7-63/3/C50	TOMC7-63/3/D50	
	63A	TOMC7-63/3/B63	TOMC7-63/3/C63	TOMC7-63/3/D63	

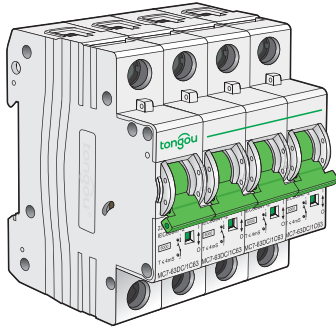


Dimensions (mm)





TOMC7-63 Miniature Circuit Breaker (Curve B, C, D)



IEC 60947-2 AS/NZS 60898.1
IEC 60898-1
EN 60898-1

- TOMC7-63 circuit breakers are multi-standard circuit breakers which combine the following functions:
 - Circuit protection against short-circuit currents,
 - Circuit protection against overload currents,
 - Suitable for industrial isolation according to IEC/EN 60947-2, standard.

Main

Product or component type	Miniature circuit-breaker
Device application	Distribution
Poles description	4P
Number of protected poles	4
Network type	AC
Trip unit technology	Thermal-magnetic
Curve code	B, C, D
Breaking capacity	6kA

Complementary

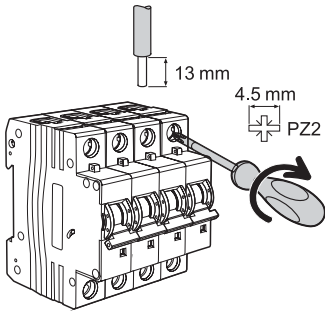
[Ue] rated operational voltage	380V/415V AC	
Control type	Toggle	
Local signalling	ON/OFF indication	
Mounting mode	Clip-on	
Mounting support	DIN rail 35mm	
Colour	Grey	
Endurance (O-C)	Electrical	10,000 cycles
	Mechanical durability	20,000 cycles

Environment

Standards	IEC 60947-2, IEC 60898-1, EN60898-1, AS/NES 60898.1
IP degree of protection	IP40 for modular enclosure conforming to IEC 60529
	IP20 conforming to IEC 60529
Operating altitude	2000 m
Ambient air temperature for operation	-35°C to +70°C
Ambient air temperature for storage	-40°C to +85°C

Connection

Rating	Tightening torque	Copper cables	
		Rigid	Flexible or ferrule

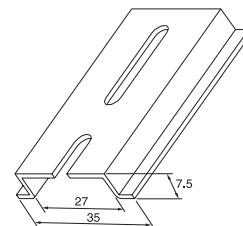
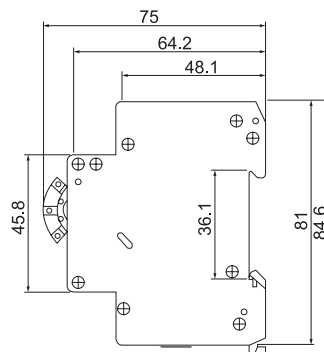
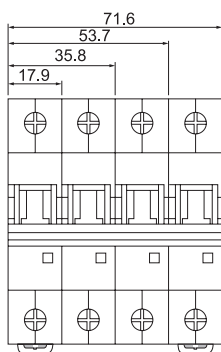


1 to 25 A	2 N.m	1 to 25 mm ²	1 to 16 mm ²
32 to 63 A	2.5 N.m	1 to 35 mm ²	1 to 25 mm ²

Catalog numbers

Type	Width 9 mm modules			
4P	Rating (In)	B Curve	C Curve	D Curve
	1A	TOMC7-63/4/B1	TOMC7-63/4/C1	TOMC7-63/4/D1
	3A	TOMC7-63/4/B3	TOMC7-63/4/C3	TOMC7-63/4/D3
	5A	TOMC7-63/4/B5	TOMC7-63/4/C5	TOMC7-63/4/D5
	6A	TOMC7-63/4/B6	TOMC7-63/4/C6	TOMC7-63/4/D6
	10A	TOMC7-63/4/B10	TOMC7-63/4/C10	TOMC7-63/4/D10
	16A	TOMC7-63/4/B16	TOMC7-63/4/C16	TOMC7-63/4/D16
	20A	TOMC7-63/4/B20	TOMC7-63/4/C20	TOMC7-63/4/D20
	25A	TOMC7-63/4/B25	TOMC7-63/4/C25	TOMC7-63/4/D25
	32A	TOMC7-63/4/B32	TOMC7-63/4/C32	TOMC7-63/4/D32
	40A	TOMC7-63/4/B40	TOMC7-63/4/C40	TOMC7-63/4/D40
	50A	TOMC7-63/4/B50	TOMC7-63/4/C50	TOMC7-63/4/D50
	63A	TOMC7-63/4/B63	TOMC7-63/4/C63	TOMC7-63/4/D63

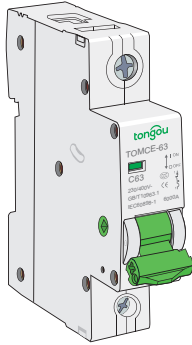
Dimensions (mm)



Protection
Circuit protection



TOMCE-63 Miniature Circuit Breaker (Curve B, C, D)



IEC 60947-2 AS/NZS 60898.1
IEC 60898-1
EN 60898-1

- TOMCE-63 circuit breakers are multi-standard circuit breakers which combine the following functions:
 - Circuit protection against short-circuit currents,
 - Circuit protection against overload currents,
 - Suitable for industrial isolation according to IEC/EN 60947-2, standard.

Main

Product or component type	Miniature circuit-breaker
Device application	Distribution
Poles description	1P
Number of protected poles	1
Network type	AC
Trip unit technology	Thermal-magnetic
Curve code	B, C, D
Breaking capacity	6kA

Complementary

[Ue] rated operational voltage	110 V , 230/240V AC	
Control type	Toggle	
Local signalling	ON/OFF indication	
Mounting mode	Clip-on	
Mounting support	DIN rail 35mm	
Colour	Grey	
Endurance (O-C)	Electrical	10,000 cycles
	Mechanical durability	20,000 cycles

Environment

Standards	IEC 60947-2 , IEC 60898-1 , EN60898-1 , AS/NES 60898.1
IP degree of protection	IP40 for modular enclosure conforming to IEC 60529
	IP20 conforming to IEC 60529
Operating altitude	2000 m
Ambient air temperature for operation	-35°C to +70°C
Ambient air temperature for storage	-40°C to +85°C

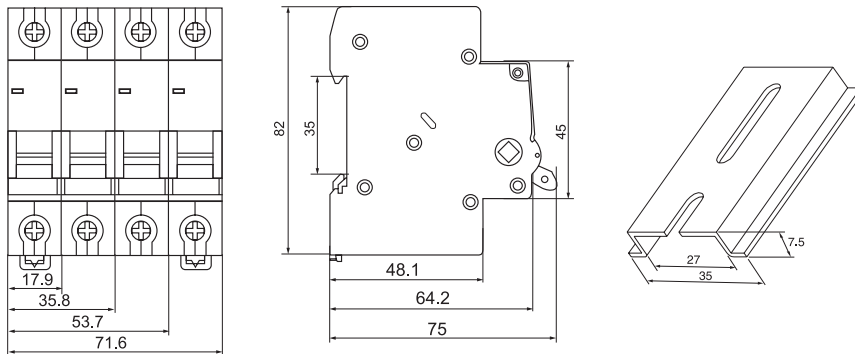
Connection

Rating	Tightening torque	Copper cables	
		Rigid	Flexible or ferrule
1 to 25 A	2 N.m	1 to 25 mm ²	1 to 16 mm ²
32 to 63 A	2.5 N.m	1 to 35 mm ²	1 to 25 mm ²

Catalog numbers

Type					Width 9 mm modules
1P	Rating (In)	B Curve	C Curve	D Curve	
	1A	TOMCE-63/1/B1	TOMCE-63/1/C1	TOMCE-63/1/D1	2
	3A	TOMCE-63/1/B3	TOMCE-63/1/C3	TOMCE-63/1/D3	
	5A	TOMCE-63/1/B5	TOMCE-63/1/C5	TOMCE-63/1/D5	
	6A	TOMCE-63/1/B6	TOMCE-63/1/C6	TOMCE-63/1/D6	
	10A	TOMCE-63/1/B10	TOMCE-63/1/C10	TOMCE-63/1/D10	
	16A	TOMCE-63/1/B16	TOMCE-63/1/C16	TOMCE-63/1/D16	
	20A	TOMCE-63/1/B20	TOMCE-63/1/C20	TOMCE-63/1/D20	
	25A	TOMCE-63/1/B25	TOMCE-63/1/C25	TOMCE-63/1/D25	
	32A	TOMCE-63/1/B32	TOMCE-63/1/C32	TOMCE-63/1/D32	
	40A	TOMCE-63/1/B40	TOMCE-63/1/C40	TOMCE-63/1/D40	
	50A	TOMCE-63/1/B50	TOMCE-63/1/C50	TOMCE-63/1/D50	
	63A	TOMCE-63/1/B63	TOMCE-63/1/C63	TOMCE-63/1/D63	

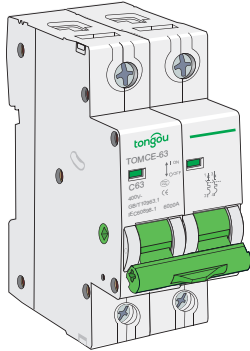
Dimensions (mm)



Protection
Circuit protection



TOMCE-63 Miniature Circuit Breaker (Curve B, C, D)



IEC 60947-2 AS/NZS 60898.1
IEC 60898-1
EN 60898-1

- TOMCE-63 circuit breakers are multi-standard circuit breakers which combine the following functions:
 - Circuit protection against short-circuit currents,
 - Circuit protection against overload currents,
 - Suitable for industrial isolation according to IEC/EN 60947-2, standard.

Main

Product or component type	Miniature circuit-breaker
Device application	Distribution
Poles description	2P
Number of protected poles	2
Network type	AC
Trip unit technology	Thermal-magnetic
Curve code	B, C, D
Breaking capacity	6kA

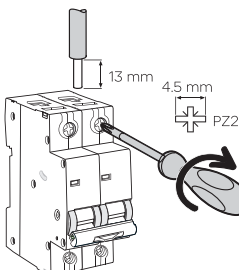
Complementary

[Ue] rated operational voltage	230V/240V, 380V/415V AC	
Control type	Toggle	
Local signalling	ON/OFF indication	
Mounting mode	Clip-on	
Mounting support	DIN rail 35mm	
Colour	Grey	
Endurance (O-C)	Electrical	10,000 cycles
	Mechanical durability	20,000 cycles

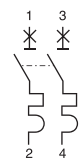
Environment

Standards	IEC 60947-2, IEC 60898-1, EN60898-1, AS/NES 60898.1
IP degree of protection	IP40 for modular enclosure conforming to IEC 60529
	IP20 conforming to IEC 60529
Operating altitude	2000 m
Ambient air temperature for operation	-35°C to +70°C
Ambient air temperature for storage	-40°C to +85°C

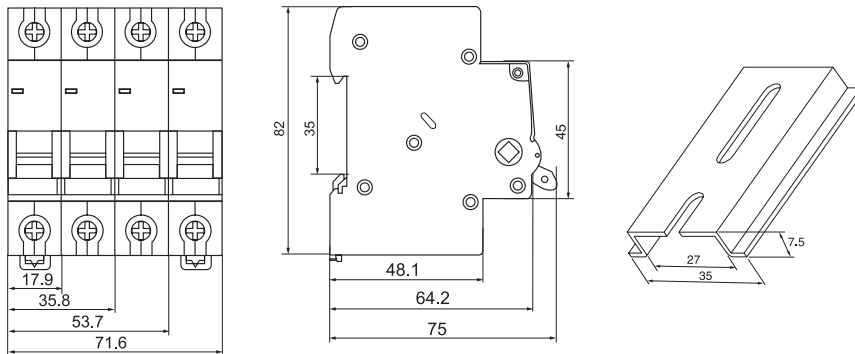
Connection

Rating	Tightening torque	Copper cables	
		Rigid	Flexible or ferrule
			
1 to 25 A	2 N.m	1 to 25 mm ²	1 to 16 mm ²
32 to 63 A	2.5 N.m	1 to 35 mm ²	1 to 25 mm ²

Catalog numbers

Type	Width 9 mm modules			
2P	Rating (In)	B Curve	C Curve	D Curve
	1A	TOMCE-63/2/B1	TOMCE-63/2/C1	TOMCE-63/2/D1
	3A	TOMCE-63/2/B3	TOMCE-63/2/C3	TOMCE-63/2/D3
	5A	TOMCE-63/2/B5	TOMCE-63/2/C5	TOMCE-63/2/D5
	6A	TOMCE-63/2/B6	TOMCE-63/2/C6	TOMCE-63/2/D6
	10A	TOMCE-63/2/B10	TOMCE-63/2/C10	TOMCE-63/2/D10
	16A	TOMCE-63/2/B16	TOMCE-63/2/C16	TOMCE-63/2/D16
	20A	TOMCE-63/2/B20	TOMCE-63/2/C20	TOMCE-63/2/D20
	25A	TOMCE-63/2/B25	TOMCE-63/2/C25	TOMCE-63/2/D25
	32A	TOMCE-63/2/B32	TOMCE-63/2/C32	TOMCE-63/2/D32
	40A	TOMCE-63/2/B40	TOMCE-63/2/C40	TOMCE-63/2/D40
	50A	TOMCE-63/2/B50	TOMCE-63/2/C50	TOMCE-63/2/D50
	63A	TOMCE-63/2/B63	TOMCE-63/2/C63	TOMCE-63/2/D63

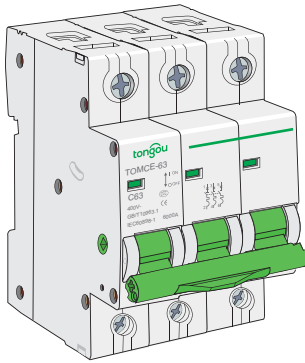
Dimensions (mm)



Protection
Circuit protection



TOMCE-63 Miniature Circuit Breaker (Curve B, C, D)



IEC 60947-2 AS/NZS 60898.1
IEC 60898-1
EN 60898-1

- TOMCE-63 circuit breakers are multi-standard circuit breakers which combine the following functions:
 - Circuit protection against short-circuit currents,
 - Circuit protection against overload currents,
 - Suitable for industrial isolation according to IEC/EN 60947-2, standard.

Main

Product or component type	Miniature circuit-breaker
Device application	Distribution
Poles description	3P
Number of protected poles	3
Network type	AC
Trip unit technology	Thermal-magnetic
Curve code	B, C, D
Breaking capacity	6kA

Complementary

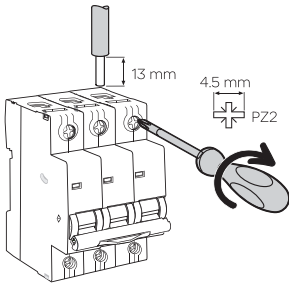
[Ue] rated operational voltage	380V/415V AC	
Control type	Toggle	
Local signalling	ON/OFF indication	
Mounting mode	Clip-on	
Mounting support	DIN rail 35mm	
Colour	Grey	
Endurance (O-C)	Electrical	10,000 cycles
	Mechanical durability	20,000 cycles

Environment

Standards	IEC 60947-2, IEC 60898-1, EN60898-1, AS/NES 60898.1
IP degree of protection	IP40 for modular enclosure conforming to IEC 60529
	IP20 conforming to IEC 60529
Operating altitude	2000 m
Ambient air temperature for operation	-35°C to +70°C
Ambient air temperature for storage	-40°C to +85°C

Connection

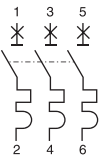
Rating	Tightening torque	Copper cables	
		Rigid	Flexible or ferrule



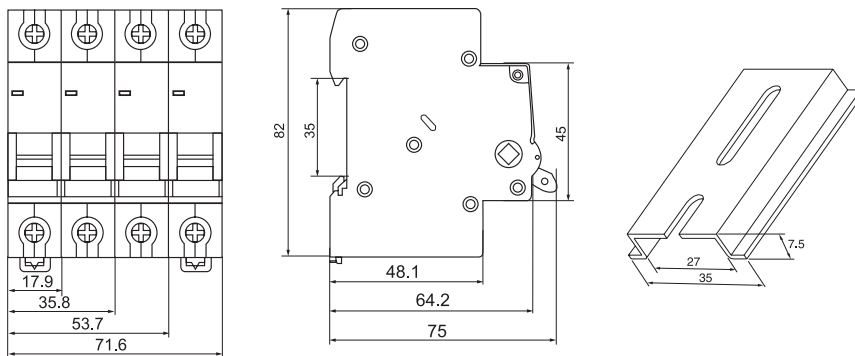
1 to 25 A	2 N.m	1 to 25 mm ²	1 to 16 mm ²
32 to 63 A	2.5 N.m	1 to 35 mm ²	1 to 25 mm ²

Catalog numbers

Type					Width 9 mm modules
3P	Rating (In)	B Curve	C Curve	D Curve	
	1A	TOMCE-63/3/B1	TOMCE-63/3/C1	TOMCE-63/3/D1	
	3A	TOMCE-63/3/B3	TOMCE-63/3/C3	TOMCE-63/3/D3	
	5A	TOMCE-63/3/B5	TOMCE-63/3/C5	TOMCE-63/3/D5	
	6A	TOMCE-63/3/B6	TOMCE-63/3/C6	TOMCE-63/3/D6	
	10A	TOMCE-63/3/B10	TOMCE-63/3/C10	TOMCE-63/3/D10	
	16A	TOMCE-63/3/B16	TOMCE-63/3/C16	TOMCE63/3/D16	6
	20A	TOMCE-63/3/B20	TOMCE-63/3/C20	TOMCE-63/3/D20	
	25A	TOMCE-63/3/B25	TOMCE-63/3/C25	TOMCE-63/3/D25	
	32A	TOMCE-63/3/B32	TOMCE-63/3/C32	TOMCE-63/3/D32	
	40A	TOMCE-63/3/B40	TOMCE-63/3/C40	TOMCE-63/3/D40	
	50A	TOMCE-63/3/B50	TOMCE-63/3/C50	TOMCE-63/3/D50	
	63A	TOMCE-63/3/B63	TOMCE-63/3/C63	TOMCE-63/3/D63	



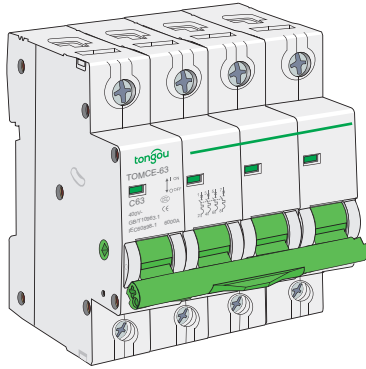
Dimensions (mm)



Protection
Circuit protection



TOMCE-63 Miniature Circuit Breaker (Curve B, C, D)



IEC 60947-2 AS/NZS 60898.1
IEC 60898-1
EN 60898-1

- TOMCE-63 circuit breakers are multi-standard circuit breakers which combine the following functions:
 - Circuit protection against short-circuit currents,
 - Circuit protection against overload currents,
 - Suitable for industrial isolation according to IEC/EN 60947-2, standard.

Main

Product or component type	Miniature circuit-breaker
Device application	Distribution
Poles description	4P
Number of protected poles	4
Network type	AC
Trip unit technology	Thermal-magnetic
Curve code	B, C, D
Breaking capacity	6kA

Complementary

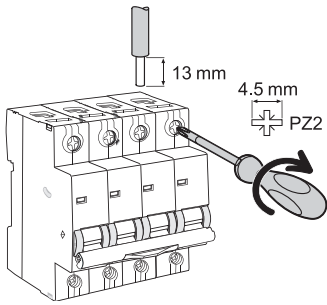
[Ue] rated operational voltage	380V/415V AC	
Control type	Toggle	
Local signalling	ON/OFF indication	
Mounting mode	Clip-on	
Mounting support	DIN rail 35mm	
Colour	Grey	
Endurance (O-C)	Electrical	10,000 cycles
	Mechanical durability	20,000 cycles

Environment

Standards	IEC 60947-2, IEC 60898-1, EN60898-1, AS/NES 60898.1
IP degree of protection	IP40 for modular enclosure conforming to IEC 60529
	IP20 conforming to IEC 60529
Operating altitude	2000 m
Ambient air temperature for operation	-35°C to +70°C
Ambient air temperature for storage	-40°C to +85°C

Connection

Rating	Tightening torque	Copper cables	
		Rigid	Flexible or ferrule



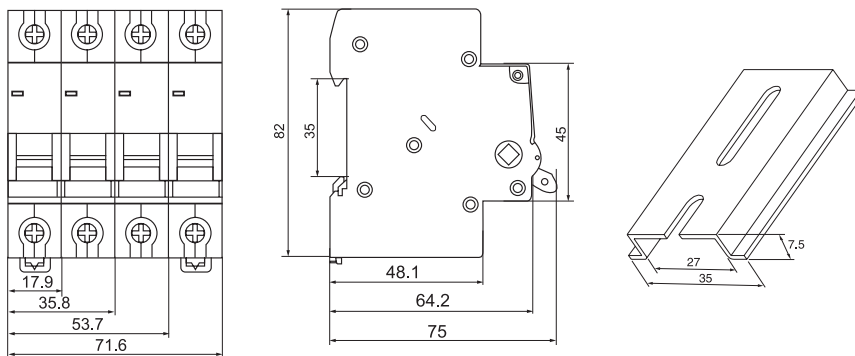
1 to 25 A	2 N.m	1 to 25 mm ²	1 to 16 mm ²
32 to 63 A	2.5 N.m	1 to 35 mm ²	1 to 25 mm ²

Catalog numbers

Type	Width 9 mm modules			
4P	Rating (In)	B Curve	C Curve	D Curve
	1A	TOMCE-63/4/B1	TOMCE-63/4/C1	TOMCE-63/4/D1
	3A	TOMCE-63/4/B3	TOMCE-63/4/C3	TOMCE-63/4/D3
	5A	TOMCE-63/4/B5	TOMCE-63/4/C5	TOMCE-63/4/D5
	6A	TOMCE-63/4/B6	TOMCE-63/4/C6	TOMCE-63/4/D6
	10A	TOMCE-63/4/B10	TOMCE-63/4/C10	TOMCE-63/4/D10
	16A	TOMCE-63/4/B16	TOMCE-63/4/C16	TOMCE-63/4/D16
	20A	TOMCE-63/4/B20	TOMCE-63/4/C20	TOMCE-63/4/D20
	25A	TOMCE-63/4/B25	TOMCE-63/4/C25	TOMCE-63/4/D25
	32A	TOMCE-63/4/B32	TOMCE-63/4/C32	TOMCE-63/4/D32
	40A	TOMCE-63/4/B40	TOMCE-63/4/C40	TOMCE-63/4/D40
	50A	TOMCE-63/4/B50	TOMCE-63/4/C50	TOMCE-63/4/D50
	63A	TOMCE-63/4/B63	TOMCE-63/4/C63	TOMCE-63/4/D63

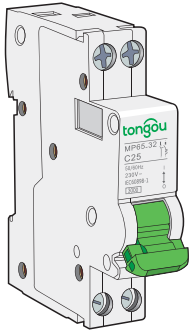
8

Dimensions (mm)





TOMP65-32 Miniature Circuit Breaker (Curve B, C)



IEC 60898-1 EN 60898-1

- TOMP65-32 circuit breakers are multi-standard circuit breakers which combine the following functions:
 - Circuit protection against short-circuit currents,
 - Circuit protection against overload currents.

Main

Product or component type	Miniature circuit-breaker
Device application	Distribution
Poles description	1P
Number of protected poles	1P+N
Network type	AC
Trip unit technology	Thermal-magnetic
Curve code	B, C,
Breaking capacity	6kA

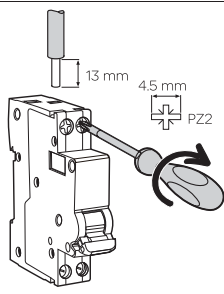
Complementary

[Ue] rated operational voltage	110 V , 230/240V AC	
Control type	Toggle	
Local signalling	ON/OFF indication	
Mounting mode	Clip-on	
Mounting support	DIN rail 35mm	
Colour	Grey	
Endurance (O-C)	Electrical	10,000 cycles
	Mechanical durability	20,000 cycles

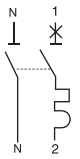
Environment

Standards	IEC 60898-1 , EN60898-1
IP degree of protection	IP40 for modular enclosure conforming to IEC 60529
	IP20 conforming to IEC 60529
Operating altitude	2000 m
Ambient air temperature for operation	-35°C to +70°C
Ambient air temperature for storage	-40°C to +85°C

Connection

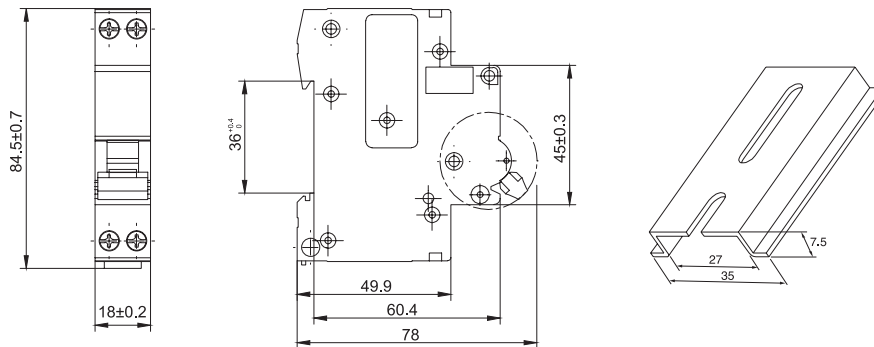
Rating	Tightening torque	Copper cables	
		Rigid	Flexible or ferrule
			
1 to 25 A	2 N.m	1 to 25 mm ²	1 to 16 mm ²
32 A	2.5 N.m	1 to 35 mm ²	1 to 25 mm ²

Catalog numbers

Type	Width 9 mm modules		
1P+N	Rating (In)	B Curve	C Curve
	1A	TOMP65-32/1N/B1	TOMP65-32/1N/C1
	3A	TOMP65-32/1N/B3	TOMP65-32/1N/C3
	5A	TOMP65-32/1N/B5	TOMP65-32/1N/C5
	6A	TOMP65-32/1N/B6	TOMP65-32/1N/C6
	10A	TOMP65-32/1N/B10	TOMP65-32/1N/C10
	16A	TOMP65-32/1N/B16	TOMP65-32/1N/C16
	20A	TOMP65-32/1N/B20	TOMP65-32/1N/C20
	25A	TOMP65-32/1N/B25	TOMP65-32/1N/C25
	32A	TOMP65-32/1N/B32	TOMP65-32/1N/C32

2

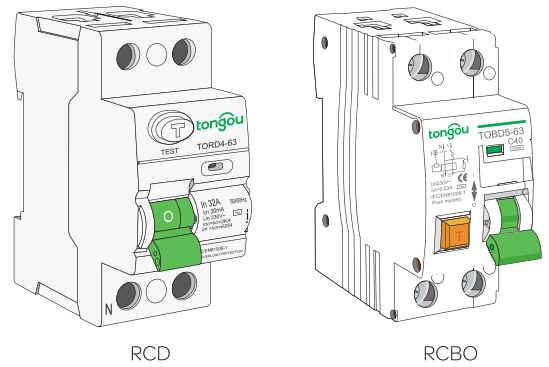
Dimensions (mm)



Residual current devices

Function

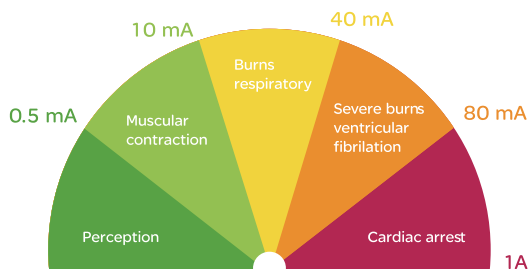
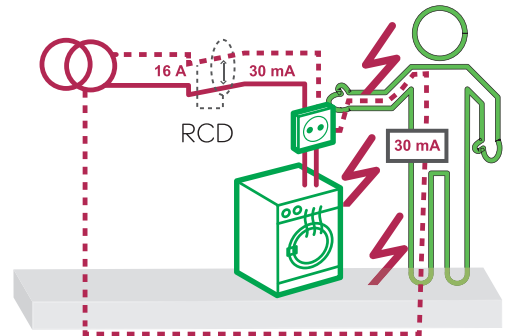
- Protection of persons against electric shock by direct contact (30 mA).
- Protection of installations against the risk of fire (300 mA).
- Protection of persons against electric shock by indirect contact (100 mA to 300 mA).



Operating principle

Protection from electric shocks by direct contact:

- Protection of persons against electric shock by direct contact (30 mA).
- Protection of installations against the risk of fire (300 mA).
- Protection of persons against electric shock by indirect contact (100 mA to 300 mA).



Research worldwide shows that the intensity of current flowing through the body determines the extent and severity of an electric shock.

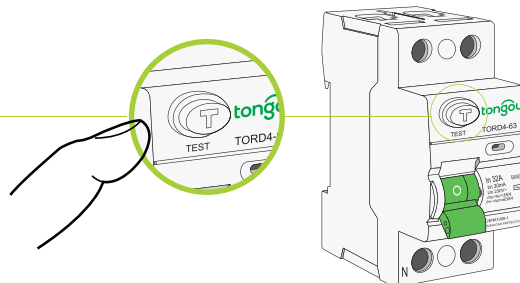
By measuring the intensity difference between live and neutral conductors, RCDs actually detect the current flowing through the human body. If this current reaches the 30 mA limit, the RCD trips within a few milliseconds, so preventing injury or worse.

- Injuries become serious when currents exceed 40 to 50 mA during one second.
- Theoretically, a 150 mA current flows through the body when a person touches a 230 V energised conductor under dry conditions.

Check RCDs regularly

Test




! Testing the RCD every 3 months enables detection of any event that may have impaired its operation



Residual current devices

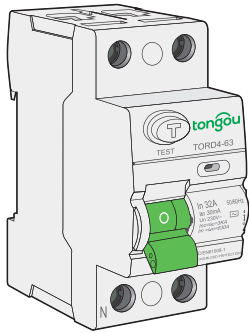
Selection

Residual current sensitivity

Protection from	Residential	Non-residential	Sensitivity
Electric shocks by direct contact			
	Mandatory protection for all socket outlets Mandatory protection for all electrical equipment in bathroom Recommended for lighting circuits	Mandatory protection for all socket outlets Mandatory protection for all equipment located close to water points	30 mA 10 mA for all applications where required by the standard (e.g.: jacuzzi, swimming pools, etc.)
Fire ignited by leakage current			
	Recommended in old buildings (presence of dust or moisture)	Mandatory in all locations under risk of fire or explosion Recommended in all premises under presence of dust, moisture, chemical agents.	300 mA
Electric shock by indirect contact			
	All circuits in case of "TT" earthing system	All circuits in case of "TT" earthing system	100 mA or 300 mA



TORD4-63 Residual Current Circuit Breaker (AC, A type)



IEC 61008-1
EN61008-1
AS/NZS 61008-1

- The TORD4-63 residual current circuit breakers provide:
 - Protection of persons against electric shock by direct contact (y 30 mA),
 - Protection of persons against electric shock by indirect contact (u 100 mA),
 - Protection of installations against the risk of fire (300 mA or 500 mA).

Main

Product or component type	Residual current
Device application	Distribution
Poles description	1P+N / 2P
Number of protected poles	2
Network type	AC, A
Rated residual operating current I_n (mA)	10, 30, 100, 300, 500
Rated frequency	50/60Hz
Rated aimpulse voithstand voltage (u_{imp})	6kV
Retad conditional residual short-circuit current $I_{\Delta c}$	6kA

Complementary

[U_e] rated operational voltage	110 V, 230/240V AC
Control type	Toggle
Local signalling	ON/OFF indication
Mounting mode	Clip-on
Mounting support	DIN rail 35mm
Colour	Grey
Electro-mechanical endurance	$\geq 20,000$ cycles

Environment

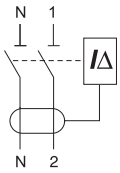
Standards	IEC 61009-1, EC 61008-1, AS/NZS 61008-1
IP degree of protection	IP40 for modular enclosure conforming to IEC 60529 IP20 conforming to IEC 60529
Operating altitude	2000 m
Ambient air temperature for operation	-5°C to +60°C
Ambient air temperature for storage	-40°C to +85°C

Catalogue numbers

TORD4-63 RCCB

Type Product AC  Width in 9 mm module

Auxiliaries

2P	Sensitivity	10 mA	30 mA	100 mA	300 mA	500 mA
	Rating	16A	TORD4-63/2/16/001	-	-	-
	25A	TORD4-63/2/25/001	TORD4-63/2/25/003	-	TORD4-63/2/25/03	TORD4-63/2/25/05
	40A	-	TORD4-63/2/40/003	TORD4-63/2/40/01	TORD4-63/2/40/03	TORD4-63/2/40/05
	63A	-	TORD4-63/2/63/003	TORD4-63/2/63/01	TORD4-63/2/63/03	TORD4-63/2/63/05
	80A	-	TORD4-63/2/80/003	TORD4-63/2/80/01	TORD4-63/2/80/03	-
	100A	-	TORD4-63/2/100/003	TORD4-63/2/100/01	TORD4-63/2/100/03	-

4

Voltage rating (Ue) 2P 110 - 240 V

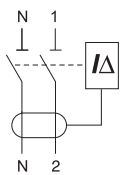
Operating frequency 50/60Hz

Catalogue numbers

TORD4A-63 RCCB

Type Product A  Width in 9 mm module

Auxiliaries

2P	Sensitivity	10 mA	30 mA	100 mA	300 mA	500 mA
	Rating	16A	TORD4A-63/2/16/001	-	-	-
	25A	TORD4A-63/2/25/001	TORD4A-63/2/25/003	-	TORD4A-63/2/25/03	-
	40A	-	TORD4A-63/2/40/003	-	TORD4A-63/2/40/03	TORD4A-63/2/40/05
	63A	-	TORD4A-63/2/63/003	-	TORD4A-63/2/63/03	TORD4A-63/2/63/05
	100A	-	TORD4A-63/2/100/003	-	TORD4A-63/2/100/03	TORD4A-63/2/100/05

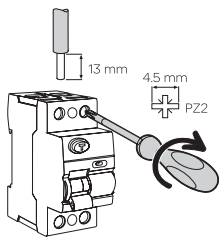
4

Voltage rating (Ue) 2P 110 - 240 V

Operating frequency 50/60Hz

Connection

Rating Tightening torque Copper cables Rigid Flexible or ferrule



1 to 25 A

2 N.m

1 to 25 mm²

1 to 16 mm²

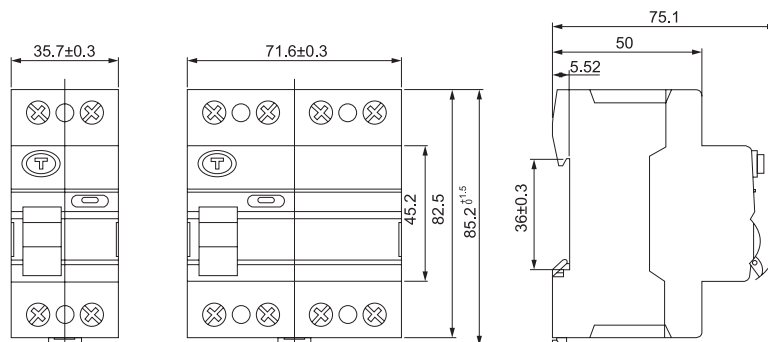
32 to 63 A

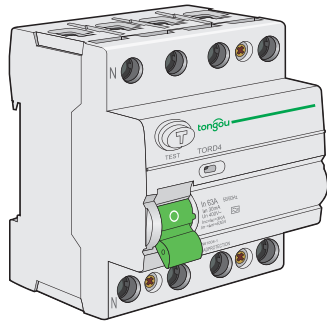
2.5 N.m

1 to 35 mm²

1 to 25 mm²

Dimensions (mm)





IEC 61008-1
EN61008-1
AS/NZS 61008-1

- The TORD4-63 residual current circuit breakers provide:
 - Protection of persons against electric shock by direct contact (y 30 mA),
 - Protection of persons against electric shock by indirect contact (u 100 mA),
 - Protection of installations against the risk of fire (300 mA or 500 mA).

Main

Product or component type	Residual current
Device application	Distribution
Poles description	3P+N / 4P
Number of protected poles	4
Network type	AC, A
Rated residual operating current I_n (mA)	10, 30, 100, 300, 500
Rated frequency	50/60Hz
Rated aimpulse voithstand voltage (uimp)	6kV
Retad conditional residual short-circuit current $I_{\Delta c}$	6kA

Complementary

[Ue] rated operational voltage	380/415V AC
Control type	Toggle
Local signalling	ON/OFF indication
Mounting mode	Clip-on
Mounting support	DIN rail 35mm
Colour	Grey
Electro-mechanical endurance	$\geq 20,000$ cycles

Environment

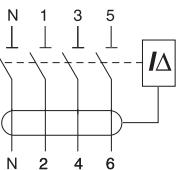
Standards	IEC 61009-1, EC 61008-1, AS/NZS 61008-1
IP degree of protection	IP40 for modular enclosure conforming to IEC 60529 IP20 conforming to IEC 60529
Operating altitude	2000 m
Ambient air temperature for operation	-5°C to +60°C
Ambient air temperature for storage	-40°C to +85°C

Catalogue numbers

TORD4-63 RCCB

Type Product AC  Width in 9 mm module

Auxiliaries

4P	Sensitivity	10 mA	30 mA	100 mA	300 mA	500 mA	
	Rating	25A	-	TORD4-63/4/25/003	-	TORD4-63/4/25/03	TORD4-63/4/25/05
	40A	-	TORD4-63/4/40/003	TORD4A-63/4/40/01	TORD4-63/4/40/03	TORD4-63/4/40/05	
	63A	-	TORD4-63/4/63/003	TORD4A-63/4/63/01	TORD4-63/4/63/03	TORD4-63/4/63/05	
	80A	-	TORD4-63/4/80/003	TORD4A-63/4/80/01	TORD4-63/4/80/03	TORD4-63/4/80/05	
	100A	-	TORD4-63/4/100/003	TORD4A-63/4/100/01	TORD4-63/4/100/03	-	

8

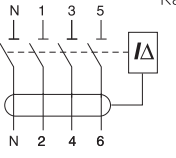
Voltage rating (Ue) 4P 400 - 415 V
 Operating frequency 50/60Hz

Catalogue numbers

TORD4A-63 RCCB

Type Product A  Width in 9 mm module

Auxiliaries

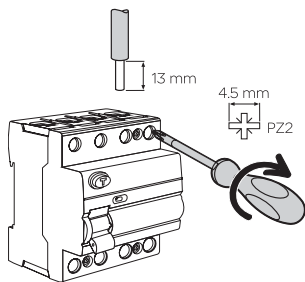
4P	Sensitivity	10 mA	30 mA	100 mA	300 mA	500 mA	
	Rating	25A	-	TORD4A-63/4/25/003	-	TORD4A-63/4/25/03	-
	40A	-	TORD4A-63/4/40/003	TORD4A-63/4/40/01	TORD4A-63/4/40/03	TORD4A-63/4/40/05	
	63A	-	TORD4A-63/4/63/003	TORD4A-63/4/63/01	TORD4A-63/4/63/03	TORD4A-63/4/63/05	
	80A	-	TORD4A-63/4/80/003	-	TORD4A-63/4/80/03	TORD4A-63/4/80/05	
	100A	-	TORD4A-63/4/100/003	-	TORD4A-63/4/100/03	TORD4A-63/4/100/05	

8

4P 400-415V
 Operating frequency 50/60Hz

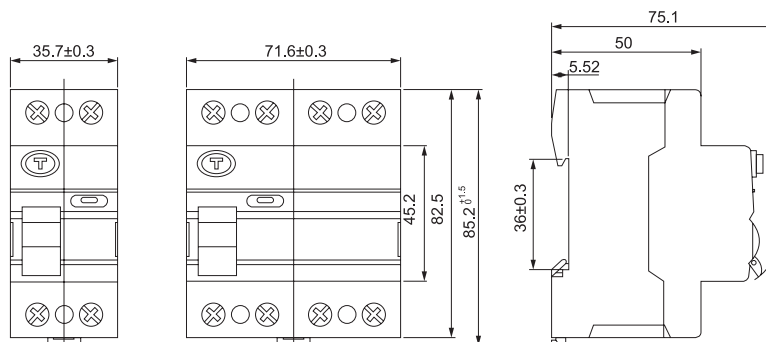
Connection

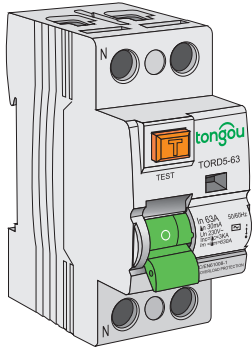
Rating Tightening torque Copper cables
 Rigid Flexible or ferrule



1 to 25 A	2 N.m	1 to 25 mm ²	1 to 16 mm ²
32 to 63 A	2.5 N.m	1 to 35 mm ²	1 to 25 mm ²

Dimensions (mm)





IEC 61008-1
EN61008-1
AS/NZS 61008-1

- The TORD5-63 residual current circuit breakers provide:
 - Protection of persons against electric shock by direct contact (y 30 mA),
 - Protection of persons against electric shock by indirect contact (u 100 mA),
 - Protection of installations against the risk of fire (300 mA or 500 mA).

Main

Product or component type	Residual current
Device application	Distribution
Poles description	1P+N / 2P
Number of protected poles	2
Network type	AC, A
Rated residual operating current I_n (mA)	10, 30, 100, 300, 500
Rated frequency	50/60Hz
Rated aimpulse voithstand voltage (u_{imp})	6kV
Retad conditional residual short-circuit current $I_{\Delta c}$	6kA

Complementary

[U_e] rated operational voltage	110 V, 230/240V AC
Control type	Toggle
Local signalling	ON/OFF indication
Mounting mode	Clip-on
Mounting support	DIN rail 35mm
Colour	Grey
Electro-mechanical endurance	$\geq 20,000$ cycles

Environment

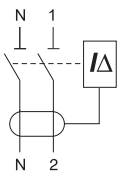
Standards	IEC 61009-1, EC 61008-1, AS/NZS 61008-1
IP degree of protection	IP40 for modular enclosure conforming to IEC 60529 IP20 conforming to IEC 60529
Operating altitude	2000 m
Ambient air temperature for operation	-5°C to +60°C
Ambient air temperature for storage	-40°C to +85°C

Catalogue numbers

TORD5-63 **RCCB**

Type Product AC  Width in 9 mm module

Auxiliaries

2P	Sensitivity	10 mA	30 mA	100 mA	300 mA	500 mA
	Rating	16A	TORD5-63/2/16/001	-	-	-
	25A	TORD5-63/2/25/001	TORD5-63/2/25/003	-	TORD5-63/2/25/03	TORD5-63/2/25/05
	40A	-	TORD5-63/2/40/003	TORD5-63/2/40/01	TORD5-63/2/40/03	TORD5-63/2/40/05
	63A	-	TORD5-63/2/63/003	TORD5-63/2/63/01	TORD5-63/2/63/03	TORD5-63/2/63/05
	80A	-	TORD5-63/2/80/003	TORD5-63/2/80/01	TORD5-63/2/80/03	-
	100A	-	TORD5-63/2/100/003	TORD5-63/2/100/01	TORD5-63/2/100/03	-

Voltage rating (Ue) 2P 110 - 240 V

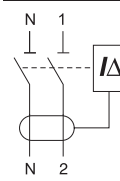
Operating frequency 50/60Hz

Catalogue numbers

TORD5A-63 **RCCB**

Type Product A  Width in 9 mm module

Auxiliaries

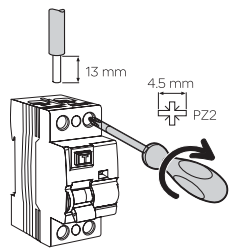
2P	Sensitivity	10 mA	30 mA	100 mA	300 mA	500 mA
	Rating	16A	TORD5A-63/2/16/001	-	-	-
	25A	TORD5A-63/2/25/001	TORD5A-63/2/25/003	-	TORD5A-63/2/25/03	-
	40A	-	TORD5A-63/2/40/003	-	TORD5A-63/2/40/03	TORD5A-63/2/40/05
	63A	-	TORD5A-63/2/63/003	-	TORD5A-63/2/63/03	TORD5A-63/2/63/05
	100A	-	TORD5A-63/2/100/003	-	TORD5A-63/2/100/03	TORD5A-63/2/100/05

Voltage rating (Ue) 2P 110 - 240 V

Operating frequency 50/60Hz

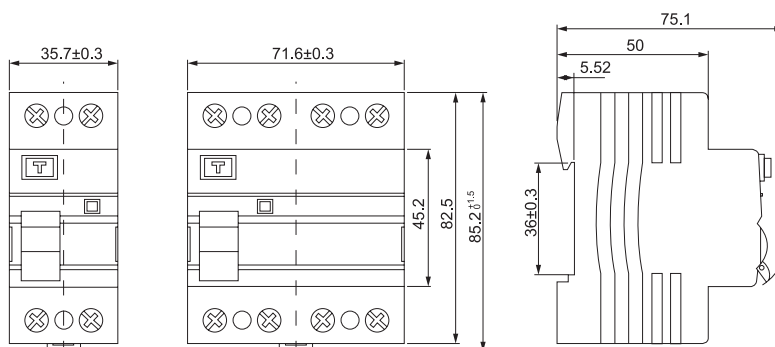
Connection

Rating Tightening torque Copper cables Rigid Flexible or ferrule



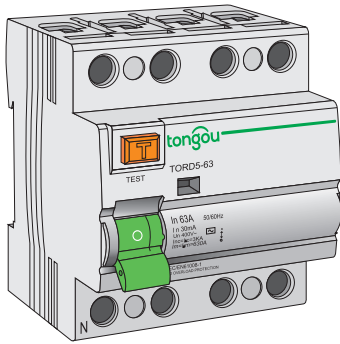
1 to 25 A	2 N.m	1 to 25 mm ²	1 to 16 mm ²
32 to 63 A	2.5 N.m	1 to 35 mm ²	1 to 25 mm ²

Dimensions (mm)





TORD5-63 Residual Current Circuit Breaker (AC, A type)



IEC 61008-1
EN61008-1
AS/NZS 61008-1

- The TORD5-63 residual current circuit breakers provide:
 - Protection of persons against electric shock by direct contact (I_n 30 mA),
 - Protection of persons against electric shock by indirect contact (I_n 100 mA),
 - Protection of installations against the risk of fire (300 mA or 500 mA).

Main

Product or component type	Residual current
Device application	Distribution
Poles description	3P+N / 4P
Number of protected poles	4
Network type	AC
Rated residual operating current I_n (mA)	10, 30, 100, 300, 500
Rated frequency	50/60Hz
Rated aimpulse voithstand voltage (U_{imp})	6kV
Retad conditional residual short-circuit current $I_{\Delta c}$	6kA

Complementary


[U_e] rated operational voltage	380/415V AC
Control type	Toggle
Local signalling	ON/OFF indication
Mounting mode	Clip-on
Mounting support	DIN rail 35mm
Colour	Grey
Electro-mechanical endurance	≥ 4000 cycles

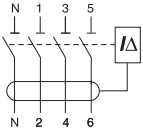
Environment

Standards	IEC 61009-1, EC 61008-1, AS/NZS 61008-1
IP degree of protection	IP40 for modular enclosure conforming to IEC 60529 IP20 conforming to IEC 60529
Operating altitude	2000 m
Ambient air temperature for operation	-5°C to +60°C
Ambient air temperature for storage	-40°C to +85°C

Catalogue numbers

TORD5-63 RCCB


Type Product	AC						Width in 9 mm module
Auxiliaries							
4P	Sensitivity	10 mA	30 mA	100 mA	300 mA	500 mA	
	Rating	25A	-	TORD5-63/4/25/003	-	TORD5-63/4/25/03	TORD5-63/4/25/05
		40A	-	TORD5-63/4/40/003	TORD5-63/4/40/01	TORD5-63/4/40/03	TORD5-63/4/40/05
		63A	-	TORD5-63/4/63/003	TORD5-63/4/63/01	TORD5-63/4/63/03	TORD5-63/4/63/05
		80A	-	TORD5-63/4/80/003	TORD5-63/4/80/01	TORD5-63/4/80/03	TORD5-63/4/80/05
		100A	-	TORD5-63/4/100/003	TORD5-63/4/100/01	TORD5-63/4/100/03	-
Voltage rating (Ue)	4P	400 - 415 V					
Operating frequency	50/60Hz						

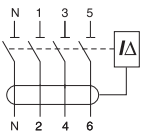


8

Catalogue numbers

TORD5A-63 RCCB

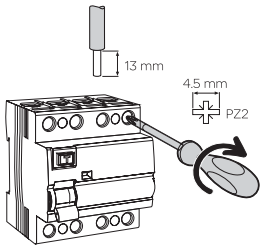
Type Product	A						Width in 9 mm module
Auxiliaries							
4P	Sensitivity	10 mA	30 mA	100 mA	300 mA	500 mA	
	Rating	25A	-	TORD5A-63/4/25/003	-	TORD5A-63/4/25/03	-
		40A	-	TORD5A-63/4/40/003	TORD5A-63/4/40/01	TORD5A-63/4/40/03	TORD5A-63/4/40/05
		63A	-	TORD5A-63/4/63/003	TORD5A-63/4/63/01	TORD5A-63/4/63/03	TORD5A-63/4/63/05
		80A	-	TORD5A-63/4/80/003	-	TORD5A-63/4/80/03	TORD5A-63/4/80/05
		100A	-	TORD5A-63/4/100/003	-	TORD5A-63/4/100/03	TORD5A-63/4/100/05
Voltage rating (Ue)	4P	400 - 415 V					
Operating frequency	50/60Hz						



8

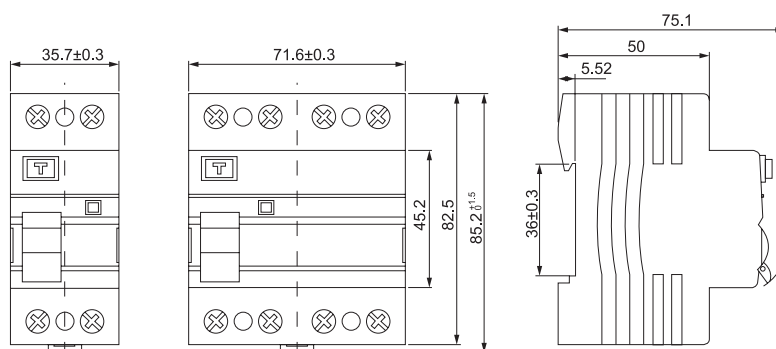
Connection

Rating	Tightening torque	Copper cables	
		Rigid	Flexible or ferrule

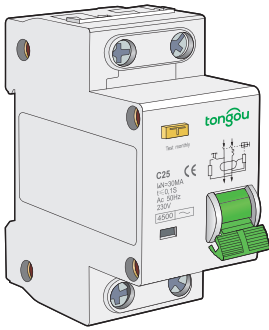


1 to 25 A	2 N.m	1 to 25 mm ²	1 to 16 mm ²
32 to 63 A	2.5 N.m	1 to 35 mm ²	1 to 25 mm ²

Dimensions (mm)



TOB10-63 Residual Current Circuit Breaker 10,30 and 100 mA with Overcurrent Protection



IEC 61009-1 EN61009-1 AS/NZS 61009-1

- The single-phase TOB10-63 RCBO's self-contained residual current device carries out complete protection of final circuits:
 - Protection against short-circuits and cable overloads
 - Protection of persons against electric shock by direct contact(10, 30 mA sensitivities) .
 - Protection of persons against electric shock by indirect contact(100 mA sensitivity) .
 - Protection of equipment against fires set by leakage currents(100 mA sensitivity) .

Main

Product or component type	Residual current with over current
Device application	Distribution
Poles description	1P+N
Number of protected poles	2
Network type	AC
Rated residual operating current $I_{\Delta n}$ (mA)	10 , 30 , 100
Rated frequency	50/60Hz
Curve code	B, C
Breaking capacity	4.5kA

Complementary

[Ue] rated operational voltage	110 V , 230/240V AC
Control type	Toggle
Local signalling	ON/OFF indication
Mounting mode	Clip-on
Mounting support	DIN rail 35mm
Colour	Grey
Electro-mechanical endurance	≥ 20,000 cycles

Environment

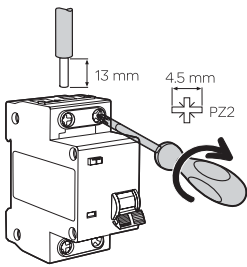
Standards	IEC 61009-1 , EN61009 , AS/NZS 61009-1
IP degree of protection	IP40 for modular enclosure conforming to IEC 60529 IP20 conforming to IEC 60529
Operating altitude	2000 m
Ambient air temperature for operation	-5°C to +60°C
Ambient air temperature for storage	-40°C to +85°C

Catalogue numbers

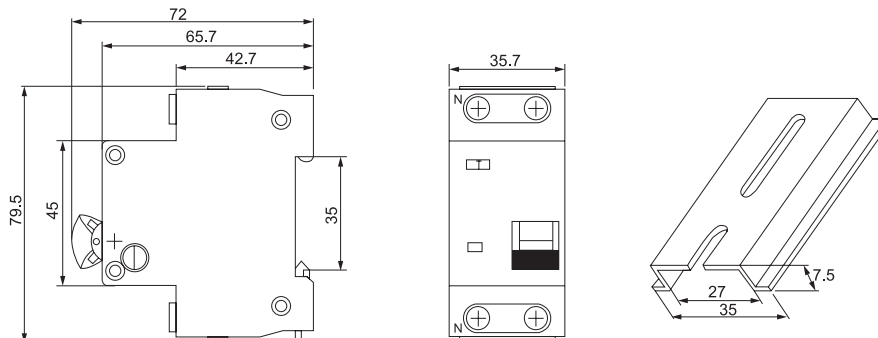
TOB10-63 RCBO		4500					Width in 9-mm modules
1P+N	AC						
B curve	Voltage rating (V)	Sensitivity (Ien)	10 mA	30 mA	100 mA		
230V 240V	Rating(I _n)	6A	TOB10-63/1N/B6/001	TOB10-63/1N/B6/003	-	4	
		10A	TOB10-63/1N/B10/001	TOB10-63/1N/B10/003	-		
		16A	TOB10-63/1N/B16/001	TOB10-63/1N/B16/003	-		
		20A	TOB10-63/1N/B20/001	TOB10-63/1N/B20/003	-		
		25A	TOB10-63/1N/B25/001	TOB10-63/1N/B25/003	-		
		32A	TOB10-63/1N/B32/001	TOB10-63/1N/B32/003	-		
		40A	TOB10-63/1N/B40/001	TOB10-63/1N/B40/003	-		
		63A	TOB10-63/1N/B63/001	TOB10-63/1N/B63/003	-		
C curve	Voltage rating (V)	Sensitivity (Ien)	10 mA	30 mA	100 mA		
110V	Rating(I _n)	10A	-	TOB10-63/1N/C10/003	-	4	
		16A	-	TOB10-63/1N/C16/003	-		
		20A	-	TOB10-63/1N/C20/003	-		
		25A	-	TOB10-63/1N/C25/003	-		
		32A	-	TOB10-63/1N/C32/003	-		
		230V 240V	Rating (I _n)	6A	TOB10-63/1N/C6/001		TOB10-63/1N/C6/003
10A	TOB10-63/1N/C10/001			TOB10-63/1N/C10/003	TOB10-63/1N/C10/01		
16A	TOB10-63/1N/C16/001			TOB10-63/1N/C16/003	TOB10-63/1N/C16/01		
20A	TOB10-63/1N/C20/001			TOB10-63/1N/C20/003	TOB10-63/1N/C20/01		
25A	TOB10-63/1N/C25/001			TOB10-63/1N/C25/003	TOB10-63/1N/C25/01		
32A	TOB10-63/1N/C32/001			TOB10-63/1N/C32/003	TOB10-63/1N/C32/01		
40A	TOB10-63/1N/C40/001			TOB10-63/1N/C40/003	TOB10-63/1N/C40/01		
63A	TOB10-63/1N/C63/001			TOB10-63/1N/C63/003	TOB10-63/1N/C63/01		

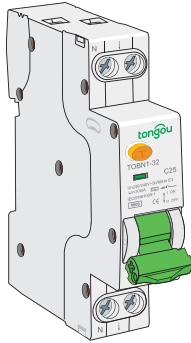
Connection

Rating	Tightening torque	Copper cables	
		Rigid	Flexible or ferrule
1 to 25 A	2 N.m	1 to 25 mm ²	1 to 16 mm ²



Dimensions (mm)





IEC 61009-1
EN61009-1
AS/NZS 61009-1

- The single-phase TOBN1-32 RCBO's self-contained residual current device carries out complete protection of final circuits:
 - Protection against short-circuits and cable overloads
 - Protection of persons against electric shock by direct contact(10, 30 mA sensitivities) .
 - Protection of persons against electric shock by indirect contact(100 mA sensitivity) .
 - Protection of equipment against fires set by leakage currents(100 mA sensitivity) .

Main

Product or component type	Residual current with over current
Device application	Distribution
Poles description	1P+N
Number of protected poles	2
Network type	AC Type A
Rated residual operating current $I_{\Delta n}$ (mA)	10 , 30 , 100
Rated frequency	50/60Hz
Curve code	B, C
Breaking capacity	6kA

Complementary


[Ue] rated operational voltage	110V, 196/253V, 230V/240V, 380V/400V AC
Control type	Toggle
Local signalling	ON/OFF indication
Mounting mode	Clip-on
Mounting support	DIN rail 35mm
Colour	Grey
Electro-mechanical endurance	≥ 20,000 cycles

Environment

Standards	IEC 61009-1 , EN61009 , AS/NZS 61009-1
IP degree of protection	IP40 for modular enclosure conforming to IEC 60529 IP20 conforming to IEC 60529
Operating altitude	2000 m
Ambient air temperature for operation	-5°C to +60°C
Ambient air temperature for storage	-40°C to +85°C

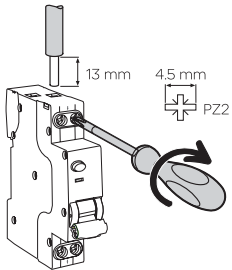
Catalogue numbers

TOBN1-32 RCBO 6000

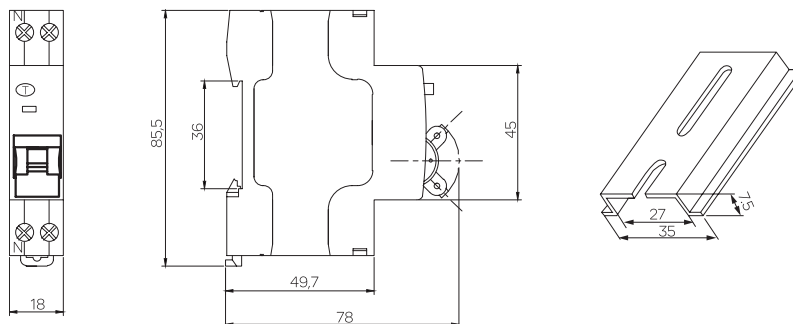
1P+N		A					Width in 9-mm modules						
B curve	Voltage rating (V)	Sensitivity (Ien)	10 mA	30 mA	100 mA								
						230V 240V	Rating(I _n)	6A	TOBN1-32/1N/B6/001	TOBN1-32/1N/B6/003	-	2	
								10A	TOBN1-32/1N/B10/001	TOBN1-32/1N/B10/003	-		
								16A	TOBN1-32/1N/B16/001	TOBN1-32/1N/B16/003	-		
								20A	TOBN1-32/1N/B20/001	TOBN1-32/1N/B20/003	-		
								25A	TOBN1-32/1N/B25/001	TOBN1-32/1N/B25/003	-		
								32A	TOBN1-32/1N/B32/001	TOBN1-32/1N/B32/003	-		
C curve	Voltage rating (V)	Sensitivity (Ien)	10 mA	30 mA	100 mA								
						110V	Rating(I _n)	10A	-	TOBN1-32/1N/C10/003	-	2	
								16A	-	TOBN1-32/1N/C16/003	-		
								20A	-	TOBN1-32/1N/C20/003	-		
								25A	-	TOBN1-32/1N/C25/003	-		
								32A	-	TOBN1-32/1N/C32/003	-		
						230V 240V	Rating (I _n)	6A	TOBN1-32/1N/C6/001	TOBN1-32/1N/C6/003	TOBN1-32/1N/C6/01		2
								10A	TOBN1-32/1N/C10/001	TOBN1-32/1N/C10/003	TOBN1-32/1N/C10/01		
								16A	TOBN1-32/1N/C16/001	TOBN1-32/1N/C16/003	TOBN1-32/1N/C16/01		
								20A	TOBN1-32/1N/C20/001	TOBN1-32/1N/C20/003	TOBN1-32/1N/C20/01		
								25A	TOBN1-32/1N/C25/001	TOBN1-32/1N/C25/003	TOBN1-32/1N/C25/01		
								32A	TOBN1-32/1N/C32/001	TOBN1-32/1N/C32/003	TOBN1-32/1N/C32/01		

Connection

Rating	Tightening torque	Copper cables	
		Rigid	Flexible or ferrule
1 to 25 A	2 N.m	1 to 25 mm ²	1 to 16 mm ²
32 A	2.5 N.m	1 to 35 mm ²	1 to 25 mm ²



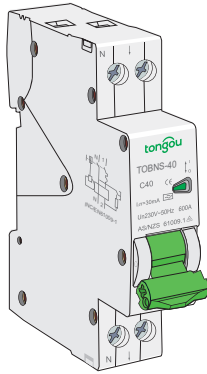
Dimensions (mm)





TOBNS-40 Residual Current Circuit Breaker with Overcurrent Protection

10,30 and 100 mA



IEC 61009-1 EN61009-1 AS/NZS 61009-1

- The single-phase TOBNS-40 RCBO's self-contained residual current device carries out complete protection of final circuits:
 - Protection against short-circuits and cable overloads
 - Protection of persons against electric shock by direct contact(10, 30 mA sensitivities) .
 - Protection of persons against electric shock by indirect contact(100 mA sensitivity) .
 - Protection of equipment against fires set by leakage currents(100 mA sensitivity) .

Main

Product or component type	Residual current with over current
Device application	Distribution
Poles description	1P+N
Number of protected poles	2
Network type	AC Type A
Rated residual operating current $I_{\Delta n}$ (mA)	10 , 30 , 100
Rated frequency	50/60Hz
Curve code	B, C
Breaking capacity	6kA

Complementary


[Ue] rated operational voltage	110V, 196/253V, 230V/240V, 380V/400V AC
Control type	Toggle
Local signalling	ON/OFF indication
Mounting mode	Clip-on
Mounting support	DIN rail 35mm
Colour	Grey
Electro-mechanical endurance	≥ 20,000 cycles

Environment

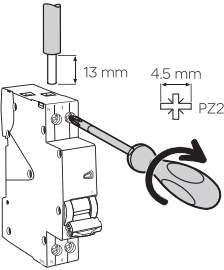


Standards	IEC 61009-1 , EN61009 , AS/NZS 61009-1
IP degree of protection	IP40 for modular enclosure conforming to IEC 60529 IP20 conforming to IEC 60529
Operating altitude	2000 m
Ambient air temperature for operation	-5°C to +60°C
Ambient air temperature for storage	-40°C to +85°C

Catalogue numbers

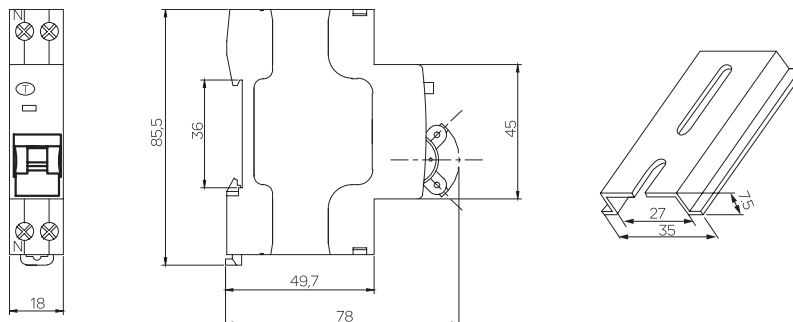
TOBNS-40 RCBO 6000

1P+N	A					Width in 9-mm modules
B curve	Voltage rating (V)	Sensitivity (Ien)	10 mA	30 mA	100 mA	2
230V 240V	Rating(In)	6A	TOBNS-40/1N/B6/001	TOBNS-40/1N/B6/003	-	
		10A	TOBNS-40/1N/B10/001	TOBNS-40/1N/B10/003	-	
		16A	TOBNS-40/1N/B16/001	TOBNS-40/1N/B16/003	-	
		20A	TOBNS-40/1N/B20/001	TOBNS-40/1N/B20/003	-	
		25A	TOBNS-40/1N/B25/001	TOBNS-40/1N/B25/003	-	
		32A	TOBNS-40/1N/B32/001	TOBNS-40/1N/B32/003	-	
		40A	TOBNS-40/1N/B40/001	TOBNS-40/1N/B40/003	-	
C curve	Voltage rating (V)	Sensitivity (Ien)	10 mA	30 mA	100 mA	2
110V	Rating(In)	10A	-	TOBNS-40/1N/C10/003	-	
		16A	-	TOBNS-40/1N/C16/003	-	
		20A	-	TOBNS-40/1N/C20/003	-	
		25A	-	TOBNS-40/1N/C25/003	-	
		32A	-	TOBNS-40/1N/C32/003	-	
		40A	-	TOBNS-40/1N/C40/003	-	
230V 240V	Rating (In)	6A	TOBNS-40/1N/C6/001	TOBNS-40/1N/C6/003	TOBNS-40/1N/C6/01	
		10A	TOBNS-40/1N/C10/001	TOBNS-40/1N/C10/003	TOBNS-40/1N/C10/01	
		16A	TOBNS-40/1N/C16/001	TOBNS-40/1N/C16/003	TOBNS-40/1N/C16/01	
		20A	TOBNS-40/1N/C20/001	TOBNS-40/1N/C20/003	TOBNS-40/1N/C20/01	
		25A	TOBNS-40/1N/C25/001	TOBNS-40/1N/C25/003	TOBNS-40/1N/C25/01	
		32A	TOBNS-40/1N/C32/001	TOBNS-40/1N/C32/003	TOBNS-40/1N/C32/01	
		40A	TOBNS-40/1N/C40/001	TOBNS-40/1N/C40/003	TOBNS-40/1N/C40/01	

Connection

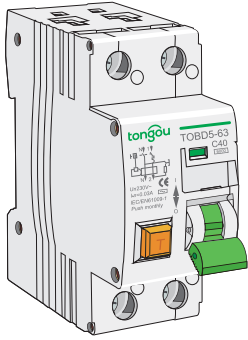
Rating	Tightening torque	Copper cables	
		Rigid	Flexible or ferrule
			
1 to 25 A	2 N.m	1 to 25 mm ²	1 to 16 mm ²
32 A	2.5 N.m	1 to 35 mm ²	1 to 25 mm ²

Dimensions (mm)



TOBD5-63 Residual Current Circuit Breaker with Overcurrent Protection

10,30 and 100 mA



IEC 61009-1
EN61009-1
AS/NZS 61009-1

- The single-phase TOBD5-63 RCBO's self-contained residual current device carries out complete protection of final circuits:
 - Protection against short-circuits and cable overloads
 - Protection of persons against electric shock by direct contact(10, 30 mA sensitivities) .
 - Protection of persons against electric shock by indirect contact(100 mA sensitivity) .
 - Protection of equipment against fires set by leakage currents(100 mA sensitivity) .

Main

Product or component type	Residual current with over current
Device application	Distribution
Poles description	1P+N
Number of protected poles	2
Network type	AC Type A
Rated residual operating current $I_{\Delta n}$ (mA)	10 , 30 , 100
Rated frequency	50/60Hz
Curve code	B, C
Breaking capacity	6kA

Complementary


[Ue] rated operational voltage	110V,196/253V,230/240V, 380/400V AC
Control type	Toggle
Local signalling	ON/OFF indication
Mounting mode	Clip-on
Mounting support	DIN rail 35mm
Colour	Grey
Electro-mechanical endurance	≥ 20,000 cycles

Environment

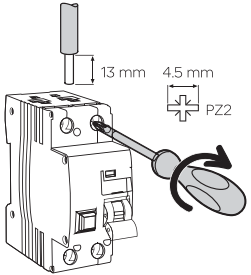
Standards	IEC 61009-1 , EN61009 , AS/NZS 61009-1
IP degree of protection	IP40 for modular enclosure conforming to IEC 60529 IP20 conforming to IEC 60529
Operating altitude	2000 m
Ambient air temperature for operation	-5°C to +60°C
Ambient air temperature for storage	-40°C to +85°C

Catalogue numbers

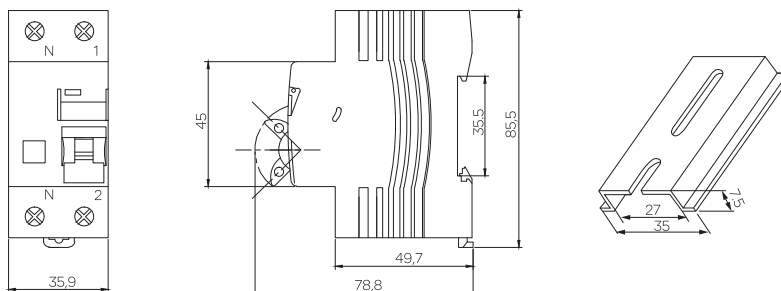
TOBD5-63 RCBO 6000

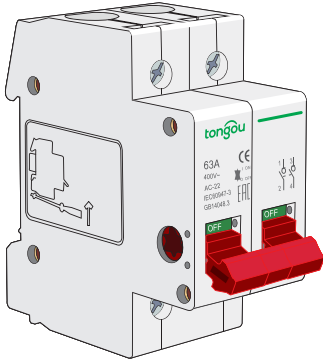
1P+N	A					Width in 9-mm modules	
B curve	Voltage rating (V) 230V 240V	Rating(In)	Sensitivity (Ien)	10 mA	30 mA	100 mA	4
			6A	TOBD5-63/1N/B6/001	TOBD5-63/1N/B6/003	-	
			10A	TOBD5-63/1N/B10/001	TOBD5-63/1N/B10/003	-	
			16A	TOBD5-63/1N/B16/001	TOBD5-63/1N/B16/003	-	
			20A	TOBD5-63/1N/B20/001	TOBD5-63/1N/B20/003	-	
			25A	TOBD5-63/1N/B25/001	TOBD5-63/1N/B25/003	-	
			32A	TOBD5-63/1N/B32/001	TOBD5-63/1N/B32/003	-	
			40A	TOBD5-63/1N/B40/001	TOBD5-63/1N/B40/003	-	
			63A	TOBD5-63/1N/B63/001	TOBD5-63/1N/B63/003	-	
			C curve	Voltage rating (V) 110V 230V 240V	Rating(In)	Sensitivity (Ien)	
10A	-	TOBD5-63/1N/C10/003				-	
16A	-	TOBD5-63/1N/C16/003				-	
20A	-	TOBD5-63/1N/C20/003				-	
25A	-	TOBD5-63/1N/C25/003				-	
32A	-	TOBD5-63/1N/C32/003			-		
Rating (In)	6A	TOBD5-63/1N/C6/001			TOBD5-63/1N/C6/003	TOBD5-63/1N/C6/01	
	10A	TOBD5-63/1N/C10/001			TOBD5-63/1N/C10/003	TOBD5-63/1N/C10/01	
	16A	TOBD5-63/1N/C16/001			TOBD5-63/1N/C16/003	TOBD5-63/1N/C16/01	
	20A	TOBD5-63/1N/C20/001			TOBD5-63/1N/C20/003	TOBD5-63/1N/C20/01	
	25A	TOBD5-63/1N/C25/001			TOBD5-63/1N/C25/003	TOBD5-63/1N/C25/01	
	32A	TOBD5-63/1N/C32/001			TOBD5-63/1N/C32/003	TOBD5-63/1N/C32/01	
	40A	TOBD5-63/1N/C40/001			TOBD5-63/1N/C40/003	TOBD5-63/1N/C40/01	
	63A	TOBD5-63/1N/C63/001			TOBD5-63/1N/C63/003	TOBD5-63/1N/C63/01	

Connection

Rating	Tightening torque	Copper cables		
		Rigid	Flexible or ferrule	
	1 to 25 A	2 N.m	1 to 25 mm ²	1 to 16 mm ²
	32 to 63 A	2.5 N.m	1 to 35 mm ²	1 to 25 mm ²

Dimensions (mm)





IEC 60947-3

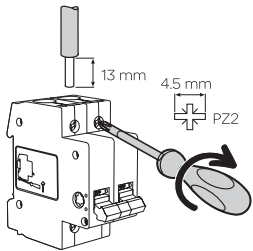
- The switch-disconnectors are used for:
 - Control (opening and closing of circuits under load)
 - Disconnection of on-load electrical circuits already protected against overloads and short-circuits.

Main

Product or component type	Switch-disconnector
Poles description	1, 2
Rating(Ie)	63A, 80A, 100A
Voltage rating (Ue)	400V, 50/60Hz
Width in 9-mm modules	4

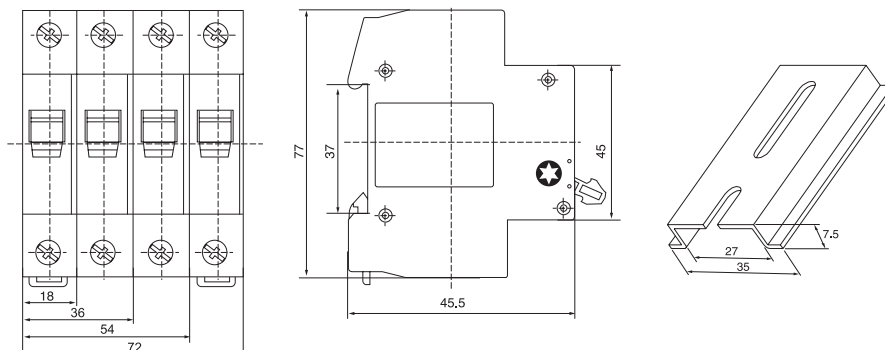
Connection

Rating	Tightening torque	Copper cables	
		Rigid	Flexible or ferrule



63 to 125 A	3.5 N.m	≤ 50 mm ²	≤ 35 mm ²
-------------	---------	----------------------	----------------------

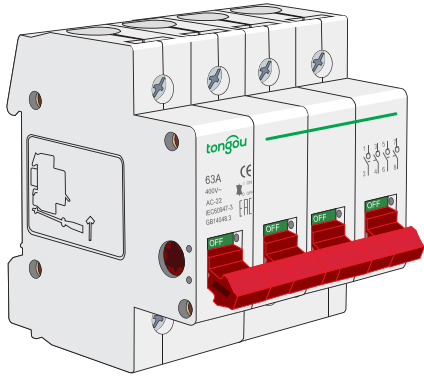
Dimensions (mm)



Protection
Circuit protection



TOD10-125 Switch-disconnector



IEC 60947-3

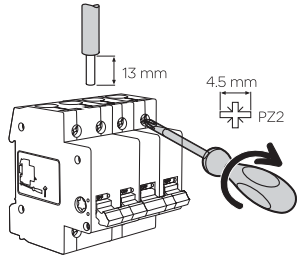
- The switch-disconnectors are used for:
 - Control (opening and closing of circuits under load)
 - Disconnection of on-load electrical circuits already protected against overloads and short-circuits.

Main

Product or component type	Switch-disconnector
Poles description	3, 4
Rating(Ie)	63A, 80A, 100A, 125A
Voltage rating (Ue)	400V, 50/60Hz
Width in 9-mm modules	8

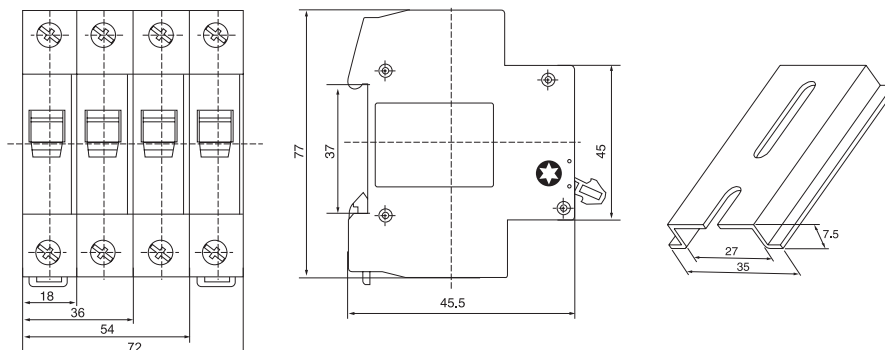
Connection

Rating	Tightening torque	Copper cables	
		Rigid	Flexible or ferrule



63 to 125 A	3.5 N.m	≤ 50 mm ²	≤ 35 mm ²
-------------	---------	----------------------	----------------------

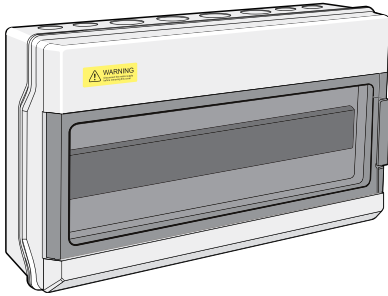
Dimensions (mm)



Catered to
your needs



TOP-SPN Distribution Box



IEC 60529 EN 60309

- Material : Frame retardant PC , UV protection.
- Application : it is applicable the location where be required water proof , dust proof and corrosion proof .
- Rigid metal DIN rail : solid to avoid flexing and raised for cabling flexibility .
- Approved Standard : IP65

Technical

Ref No	Type	Usable ways	Height (mm)	Width (mm)	Depth (mm)
TOP-SPN4	Surface	4	212	107	92
TOP-SPN6	Surface	6	200	165	100
TOP-SPN9	Surface	9	200	219	100
TOP-SPN12	Surface	12	230	273	100
TOP-SPN18	Surface	18	230	361	100

Dimensions (mm)

